

Operators Manual

Operation, Maintenance and Service



**CanVent (CVM)
Ductless Ventilation**

Halton
CARE FOR INDOOR AIR

OPERATION AND MAINTENANCE MANUAL

- All cooking equipment must comply with all requirements of NFPA96
- No equipment with high backs can be utilized.
- Only electrical equipment with a maximum surface temperature of 600°F may be used. Use of system with gas or solid fuel cooking equipment is prohibited.

OPERATION

To operate the hood system, simply depress the start switch and hold in for five (5) seconds. During this time period the unit verifies proper air flow before allowing continued operation. After this five (5) second delay period the unit will operate normally unless adequate air flow is not established.

1. The hood will operate normally unless
 - a. Any of the filters are missing.
 - b. The exhaust air flow system is disrupted.
 - c. The fire suppression system activates.
2. Fire suppression system actuation - If the fire suppression system is discharged it shall be recharged immediately only by an ANSUL authorized distributor according to the ANSUL R102 Design, Installation, Recharge and Maintenance Manual (ANSUL P/N 79973).
3. Air flow disruption - If the air flow is disrupted the exhaust air vacuum switch will turn off and the hood will not operate until the cause for the disruption is corrected.

Obstructions can be caused by:

- a. Clogged filters. Inspect all filters and replace as required per filter service method explained in this manual (page 3).
- b. Air exhaust duct blocked. Remove blockage.
- c. Electrical protection devices tripped.
- d. Blower motor fails.
- e. Vacuum switch fails.
- f. Defective vacuum hose.
- g. Clogged pilot tube.

NOTE: CONTACT CAN VENT AUTHORIZED SERVICE AGENT FOR REPAIRS.

MAINTENANCE INSTRUCTIONS

Daily Maintenance

- Primary grease filters (baffle) shall be cleaned a minimum of once (1) per day.
- Clean all interior and exterior surfaces with a mild detergent or non-abrasive cleaner. Use a cloth or sponge; then rinse and dry all surfaces.
- Do not use flammable solvents or other flammable leaning aids.

Quarterly Maintenance

Inspection and testing of the total operation and all safety interlocks shall be performed a minimum of once (1) per month as follows:

All gaskets, hoses, electrical covers and conduit, filter door fasteners, and fire suppression system (ANSUL) to be inspected by a qualified personnel. Sign and date log book after each inspection.

Test Safety Interlock as follows:

- Turn unit on; remove air switch sensor hose from filter bank. Unit should shut down.
 - * If unit continues to operate, call an authorized service company.
- Replace hose.

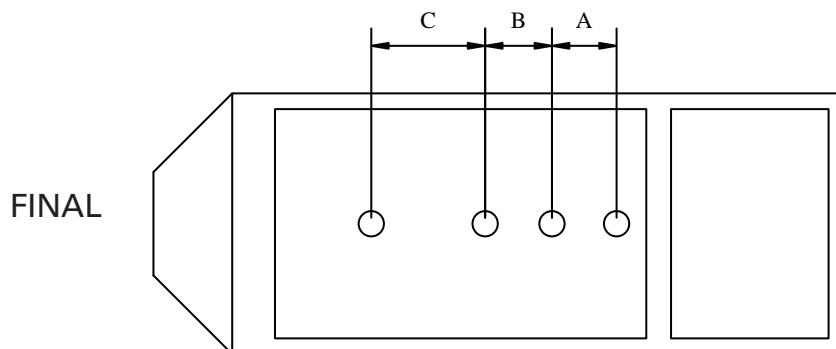
FILTER SERVICE

Perform a minimum of once (1) every three (3) months.

1. Shut off unit
2. Remove fasteners for test port "A"
3. "Zero" manometer
4. Install manometer lines across test port "A"
5. Start Unit

Continued on Page 4...

6. Enter value in log under test port "A"
7. Repeat above steps for test ports "B" and "C"
8. Lockout main power supply to unit
9. Remove filter box covers
10. Remove all filters.
11. Clean filter box, entire hood and blower section to bare metal removing all greasy and oily sludge.
12. Do not use flammable solvents or other flammable cleaning aids.
13. Care shall be taken not to apply cleaning chemicals on fusible links or other detection devices of the automatic extinguishing system and fire damper.
14. Compare values for all the filters with the acceptable values stated in log book.
15. Replace all filters which have acceptable values into their proper position within the filter bank.
16. Install new Can Vent filters in place of any filters which had non-acceptable values into their proper position within the filter bank.
17. Check condition of all filter box door seal gaskets. Replace if even slightly damaged.
18. Replace filter bank doors and tighten to ten (10) pounds torque.



FILTER BOX DIAGRAM

AIR SCREEN

Quarterly Maintenance

1. Unclasp and open both front air screen clamps.
2. Grasp air screen in its center position and lift off clamps.
3. Remove all interior air screen components by sliding them out either end.
4. Clean and disinfect all components. Replace any components that cannot be cleaned to its original condition. * **DO NOT use flammable solvents or other flammable cleaning aids.**
5. Reassemble front air screen and place into clamps. Refasten the clamps.

MAINTENANCE CHECK LIST

DATE													
VISUAL INSP. (GASKET, HOSES & ANSUL, ETC.)													
SAFETY INTERLOCK (REMOVE AIR SWITCH HOSE)													
AIR SCREEN (CLEAN & INSPECT)													
CLEANING (FILTER BOX, HOOD, BLOWER)													
DATE													
VISUAL INSP. (GASKET, HOSES & ANSUL, ETC.)													
SAFETY INTERLOCK (REMOVE AIR SWITCH HOSE)													
AIR SCREEN (CLEAN & INSPECT)													
CLEANING (FILTER BOX, HOOD, BLOWER)													
DATE													
VISUAL INSP. (GASKET, HOSES & ANSUL, ETC.)													
SAFETY INTERLOCK (REMOVE AIR SWITCH HOSE)													
AIR SCREEN (CLEAN & INSPECT)													
CLEANING (FILTER BOX, HOOD, BLOWER)													
DATE													
VISUAL INSP. (GASKET, HOSES & ANSUL, ETC.)													
SAFETY INTERLOCK (REMOVE AIR SWITCH HOSE)													
AIR SCREEN (CLEAN & INSPECT)													
CLEANING (FILTER BOX, HOOD, BLOWER)													

ENTER DATE. CHECK BOX WHEN ITEM INSPECTION OR TASK IS COMPLETE.

DO NOT FILL OUT ORIGINAL. MAKE PHOTOCOPIES OF THIS FORM.

HALTON LIMITED WARRANTY

Halton ("Manufacturer"). Warrants only to its direct purchasers and to no others, that all products manufactured by the Manufacturer shall be free from defect in materials and workmanship for a period of twelve (12) months from the date of the original installation and start-up or eighteen (18) months from date of shipment, whichever occurs first. All products sold but not manufactured by Manufacturer will be warranted for a period of twelve (12) months from date of shipment.

For products manufactured by the Manufacturer we agree to pay any reasonable labor costs necessary to repair or replace, at Manufacturers option, defective parts or materials for a period of twelve (12) months from date of original installation and start-up or eighteen (18) months from date of shipment, whichever occurs first. All labor costs subject hereto shall be performed during standard work hours at straight-time rates.

For products sold but not manufactured by the Manufacturer we agree to pay any reasonable labor costs necessary to repair or replace, at Manufacturers option, defective parts or materials for a period of (90) days from date of original installation and start-up or (12) months from date of shipment, whichever occurs first. All labor costs subject hereto shall be performed during standard work hours at straight-time rates.

Purchaser shall pay incurred premium labor charge, including overtime, weekends and holidays. Travel time, service charges, miscellaneous tools, material charges, and labor charges resulting from inaccessibility of equipment will not be paid by Manufacturer.

This **LIMITED WARRANTY SHALL APPLY ONLY** to products that have been installed and maintained in accordance with the installation and Care Instruction Manuals. Purchaser shall be solely responsible for adhering to the instructions and procedures set forth in the said instruction manuals.

This **LIMITED WARRANTY SHALL NOT BE APPLICABLE** to any damage or defect resulting from fire, flood, freezing or any Act of God, abuse, misuse, accident, neglect or failure to adhere to all instructions set forth in the installation and Care Instruction Manuals. Furthermore, this limited warranty shall not apply to any product that has been altered, unless such alteration has been approved in writing by a duly authorized representative of the manufacturer. In no event shall the manufacturer be liable for any loss, expense, personal injury or consequential damage, of any kind or character, as may result from a defect in material, and/or workmanship, however caused.

EXCEPT AS IS EXPRESSLY SET FORTH IN THIS LIMITED WARRANTY, MANUFACTURER MAKES NO WARRANTY OF MARKETABILITY FOR FITNESS OR ANY PARTICULAR PURPOSE. NEITHER DOES MANUFACTURER MAKE ANY WARRANTY, EXPRESSED OR IMPLIED, WITH RESPECT TO PRODUCTS SOLD BY MANUFACTURER OR AS TO THE USE THEREOF.

Halton Company

101 Industrial Drive, Scottsville, 42164 USA
Tel: 270-237-5600 Fax: 270-237-5700
Website address www.haltoncompany.com

Halton Indoor Climate Systems, Ltd.

1021 Brevik Place • Mississauga, ON L4W 3R7 CANADA
Tel: 905-624-0301 Fax: 905-624-0301
Website address www.haltoncanada.com

Halton
CARE FOR INDOOR AIR