

Operators Manual

Operation, Maintenance and Service Instructions



UL 1978 "Standard for Grease Ducts"; UL 710, "Exhaust Hoods for Commercial Cooking Equipment"; ULC-S647-05 and/or UL197

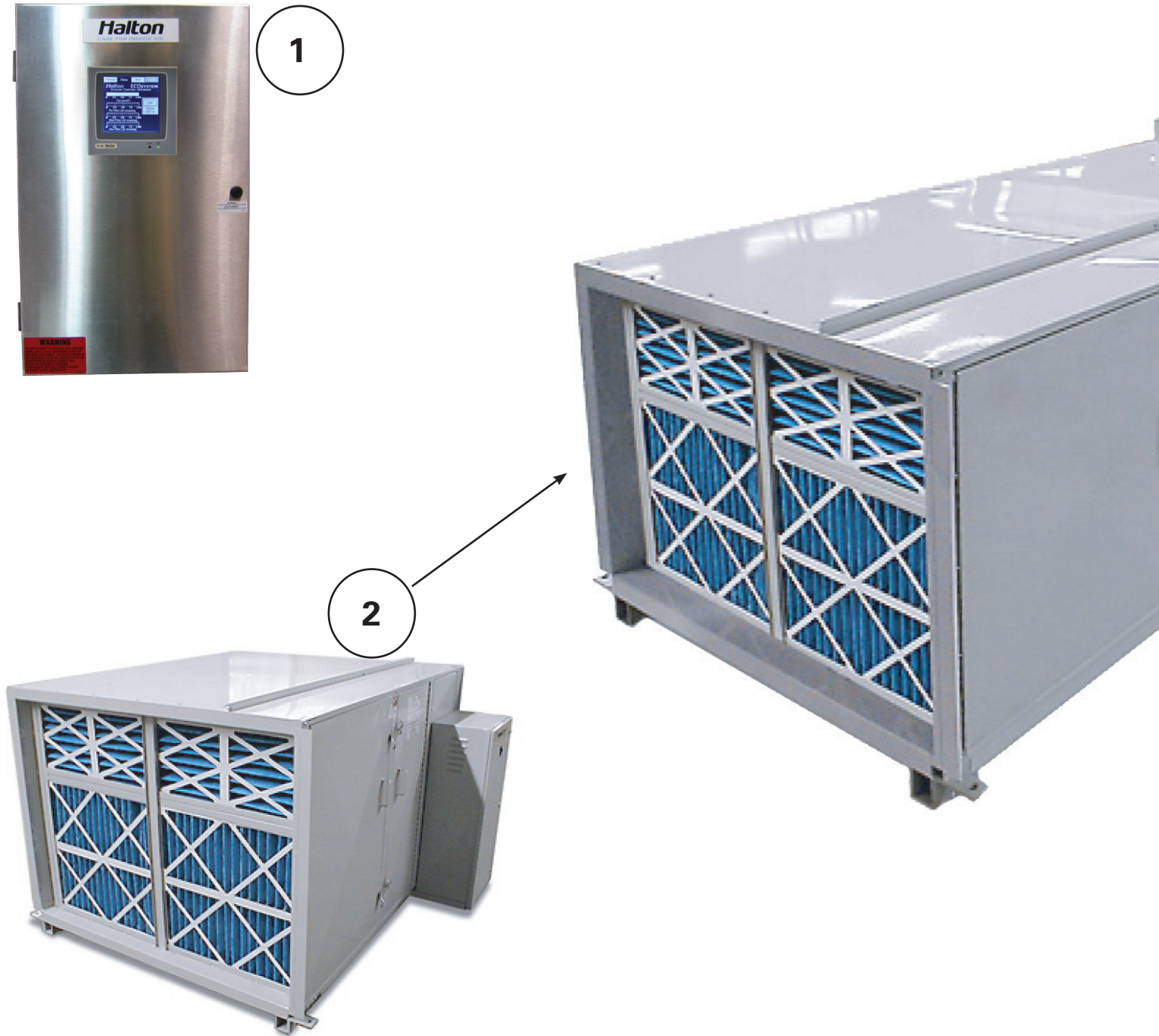
EcoloAir Unit

3000CFM, 4000CFM, 5000CFM, 6000CFM, 8000CFM,
10000CFM, 12000CFM, 15000CFM, 18000CFM,
20000CFM, 24000CFM, 28000CFM, 32000CFM,
36000CFM, 40000CFM

Halton

GENERAL

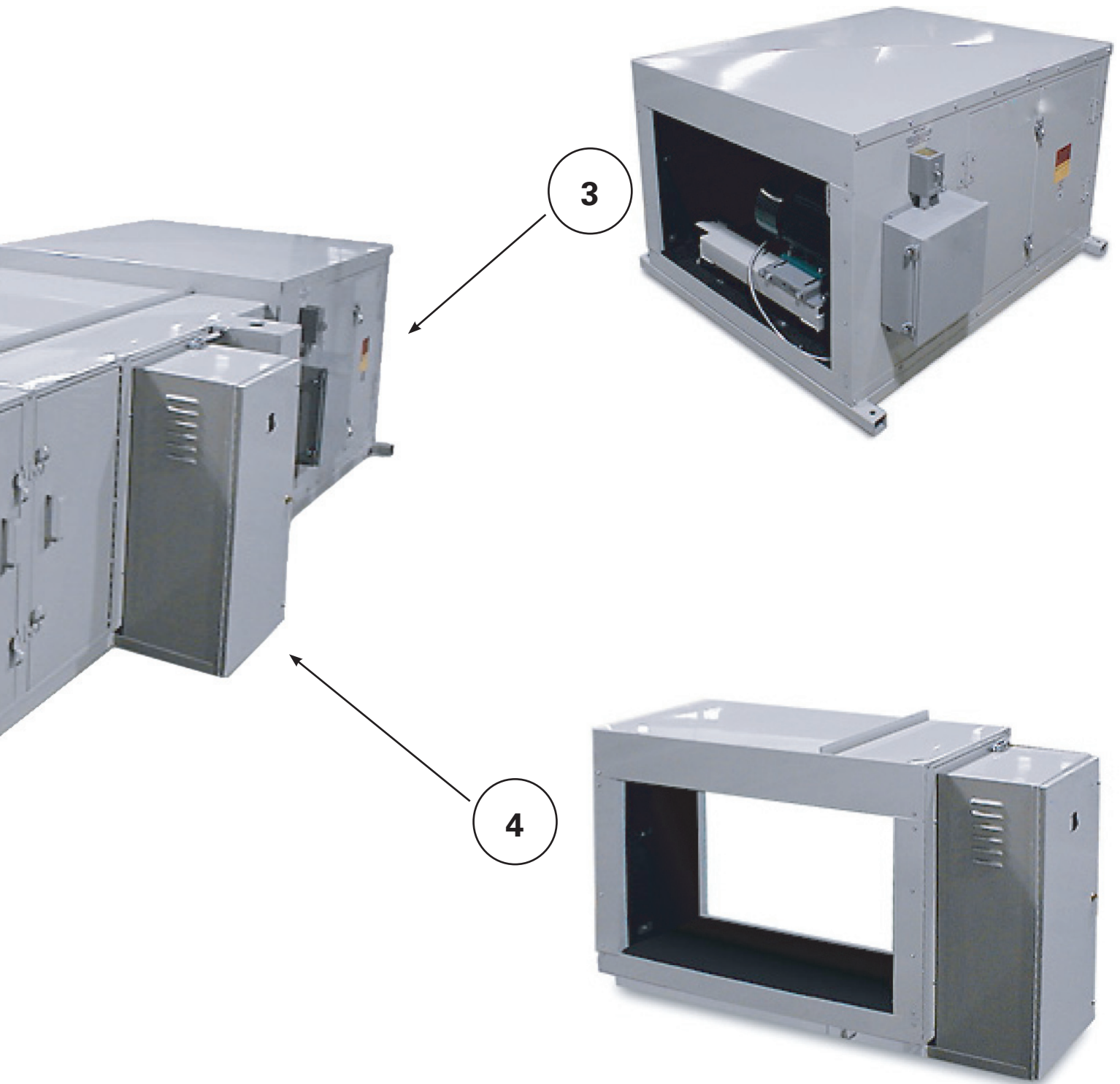
The EcoloAir System should be installed, operated and maintained as illustrated in the Installation Instruction Manual, and the Operation and Maintenance Instruction.



MAJOR COMPONENTS FOR ECOLOAIR

1. EcoloAir Control Panel
2. Filter Module

3. Exhaust Fan Module
4. Odor Reducing Module



FILTER AND ODOR REDUCING MODULES

The filter and odor reducing modules are made up of the following:

1. A 2" (51mm) MERV 7 (Minimum Efficiency Reporting Value) 30/30 UL Class 1 disposable pleated Pre-Filter
2. A 15" (381 mm) MERV 14 (Minimum Efficiency Reporting Value) Hi-Flo 95 Class 1 disposable Pocket Filter.
3. A 12" (305 mm) MERV 16 (Minimum Efficiency Reporting Value) Microtain UL Class 1 Smoke Filter
4. Odor Reducing Module
5. Fire Damper

FILTER AND ODOR REDUCING MODULE PARTS

1	Hinged Access Door (Pre Filter & Medium Filter)	11	Insulation
2	Pre Filter	12	Hanger or Lifting Bracket
3	Medium Filter	13	20 Gauge Insulation Skin
4	Hinged Access Door (Absolute Filter)	14	16 Gauge Welded Fire Proof Panels
5	High Efficiency Filter	15	Stiffner Channels
6	Ecolo Odor Reducing Module	16	Removable Pressure Tube Cover
7	Screwed On Access Panel	17	Pressure Tube Ports
8	Door Latch	18	Absolute Filter Track
9	Ecolo Support Bracket	19	Medium Filter Track
10	Fire Damper	20	Pre Filter Track

FILTER AND ODOR REDUCING MODULE PARTS VIEW

Not to scale for reference only.

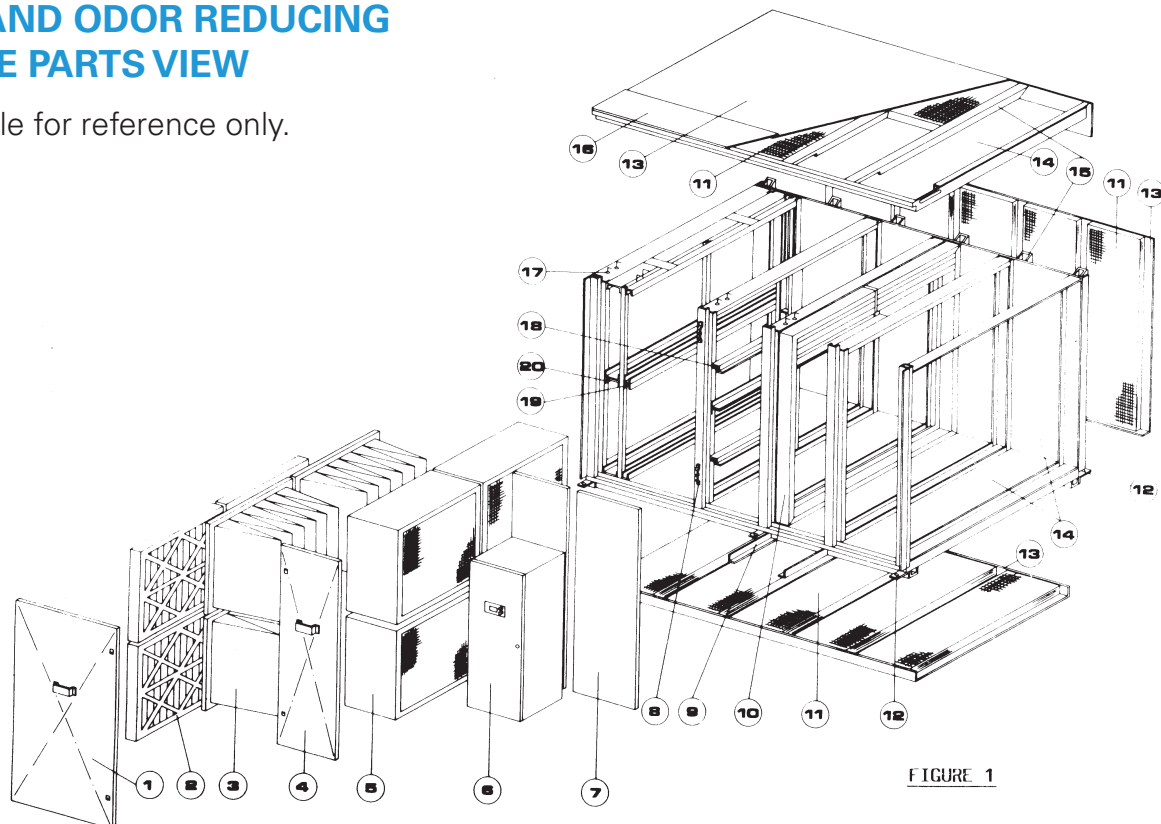
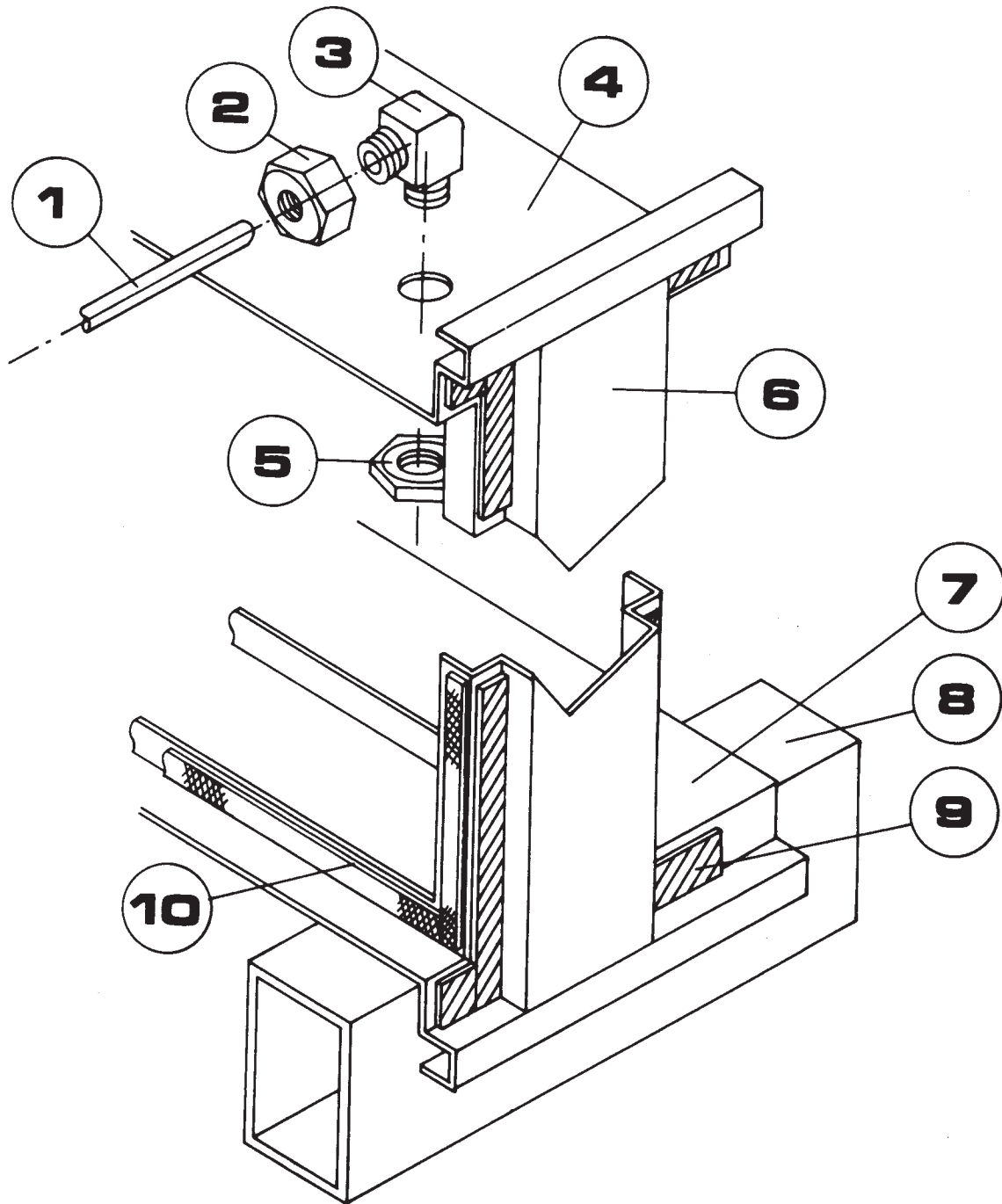


FIGURE 1

PRESSURE SWITCH AIR TUBE PARTS

1	Pressure Switch Air Tube	6	Mullion
2	Pressure Switch Air Tube Connecting Nut	7	16 Gauge Bottom Panel
3	Elbow	8	Structural Base
4	16 Gauge Top Panel	9	Fire Proof Door Gasket
5	Elbow Lock Nut	10	Filter By-Pass Gasket



FILTER REPLACEMENT

To replace filters, proceed as follows:

1. Shut off fan.
2. Loosen the access door latches and open door.
3. Check how filters are set in place to prevent air by-pass.
4. Remove filter clamp on absolute filters with hook handle provided in unit, located on inside of access door.
5. Remove all filters by sliding out the filter along bottom of filter track.
6. Slide the new filters along the bottom filter track and seat properly along filter by-pass gasket. Replace all filters in this manner. Ensure all filters are seated properly and replace filter clamp to lock Absolute filters in place.
7. Check that pressure switch air tube connection have not been disturbed by removing pressure tube chase.
8. Close access door and lock all latches.
9. To start fan, turn on disconnect switch at fan.
10. If the fan stops, remove the filter access door and check if all filters have been replaced and are seated properly.
11. Should fan continue to shut off, check all pressure switch setting

PRESSURE SWITCH ADJUSTMENTS

Check Pressure Switch Operation, proceed as follows:

- A. Turn down Alarm Delay Timer in Ecology Control Panel.
- B. Turn Number 1 Pre Filter Pressure Switch down (counter clockwise), until alarm sounds and Indicator Light illuminates (Note Setting). Return Pressure Switch to original setting (.5" Static Pressure).
- C. Turn Number 2, Medium Filter Pressure Switch down (counter clockwise), until alarm sounds and Indicator Light illuminates (Note Setting). Return Pressure Switch to original setting (1.25" Static Pressure).
- D. Turn Number 3, High Efficiency Filter Pressure Switch down (counter clockwise) until alarm sounds and Indicator Light on Ecology Panel illuminates. Return Pressure Switch to original setting (2" Static Pressure).
- E. Turn off disconnect switch and EcoloAir Fan Section
- F. Turn up Alarm Delay Timer in Ecology Control Panel, set to 20 seconds.
- G. Open Filter Access Door and remove any one Absolute filter.
- H. Turn Number 4 Overall Pressure Switch counter clockwise to lowest position on Pressure Switch Scale (0" Static Pressure).
- I. Ensure Filter Access Door is closed. Turn on Disconnect Switch on Ecology Fan Section.

- J. Turn Number 4 Overall Pressure Switch clockwise until alarm sounds, Indicator Light illuminates and then Fan unit shuts down. Note setting on Pressure Switch.
- K. Reset overall Pressure Switch one full turn counter clockwise from Trigger Setting in Step J.
- L. Reinstall Absolute Filter removed in Step G.
- M. Reset Time Delay Timer to 50 seconds. Reset Ecology Control Panel Disconnect Switch "Off" and "On" again.

FILTER REMOVAL TEST

To perform Filter Removal Test, proceed as follows:

1. Ensure all filters are in place and properly seated.
2. Remove one absolute filter.
3. Start fan. Alarm should sound and fan should shut down within one minute.
4. Replace High Efficiency filter.
5. Restart Fan.

NOTE: A FACTORY INSTALLED FIRESTAT SET AT 350°F (177°C) IS LOCATED AT THE ENTRANCE TO THE EXHAUST FAN. IT WILL SHUT OFF THE EXHAUST AND SUPPLY FANS IF THE SET TEMPERATURE IS REACHED.

FIRE DAMPER

The Fire Damper is located at the discharge set of the EcoloAir Filter Module. All Fire Dampers are supplied with fusible links set to close at 286°F (138°C) or 165°F U.S. Only. Should the fusible link melt and blades shut down by gravity, linkage replacement is necessary as follows:

1. Loosen the access door latches.
2. Remove defective fusible link and replace with new link, by holding up damper blades and wrapping link support across blades and secure at clip, on other side of frame.
3. Close the access door and lock all latches.
4. Start Fan.

HALTON ECOLOAIR FILTER QUANTITY CHART

MODEL	CAPACITY	PRE FILTER		MEDIUM FILTER		ABSOLUTE FILTER	
		MERV 7		MERV 14		MERV 16	
		FULL SIZE 24" x 24" x 2"	HALF SIZE 24" x 12" x 2"	FULL SIZE 24" X 24 x 15"	HALF SIZE 24" x 12" x 15"	FULL SIZE 24" x 24" x 12"	HALF SIZE 24" x 12" x 12"
EF3	3000	1	1	1	1	1	1
EF4	4000	2	0	2	0	2	0
EF5	5000	2	1	2	1	2	1
EF6	6000	2	2	2	2	2	2
EF8	8000	4	0	4	0	4	0
EF10	10000	4	2	4	2	4	2
EF12	12000	6	0	6	0	6	0
EF15	15000	6	3	6	3	6	3
EF18	18000	9	0	9	0	9	0
EF20	20000	9	3	9	3	9	3
EF24	24000	12	0	12	0	12	0
EF28	28000	12	4	12	4	12	4
EF32	32000	16	0	16	0	16	0
EF36	36000	16	4	16	4	16	4
EF40	40000	20	0	20	0	20	0

ODOR CONTROL

To replace a 5 Gallon bottle of Ecolo Scentry Solution

1. Open enclosure cabinet door by unscrewing the two lock bolts.
2. Remove the cap from the empty bottle.
3. Pull the dip tube assembly out of the empty bottle.
4. Remove the empty bottle from the cabinet.
5. Refill bottle or replace with a new bottle.
6. Place the bottle into the cabinet.
7. Replace the dip tube or low level control device assembly into the bottle. Make sure the dip tube reaches the bottom of the bottle.
8. Place cap on bottle neck.
9. Close the cabinet door and lock with locking bolts.

The Ecolo Unit is set to operate either on a continuous spray or on an intermittent spray cycle while fan is running.

A switch is provided on the Ecolo Control Panel to be activated for the desired application.

The unit when shipped, will be set for a 20 second spray every 1 minute. This can be adjusted in the field to give the required setting for each particular installation.

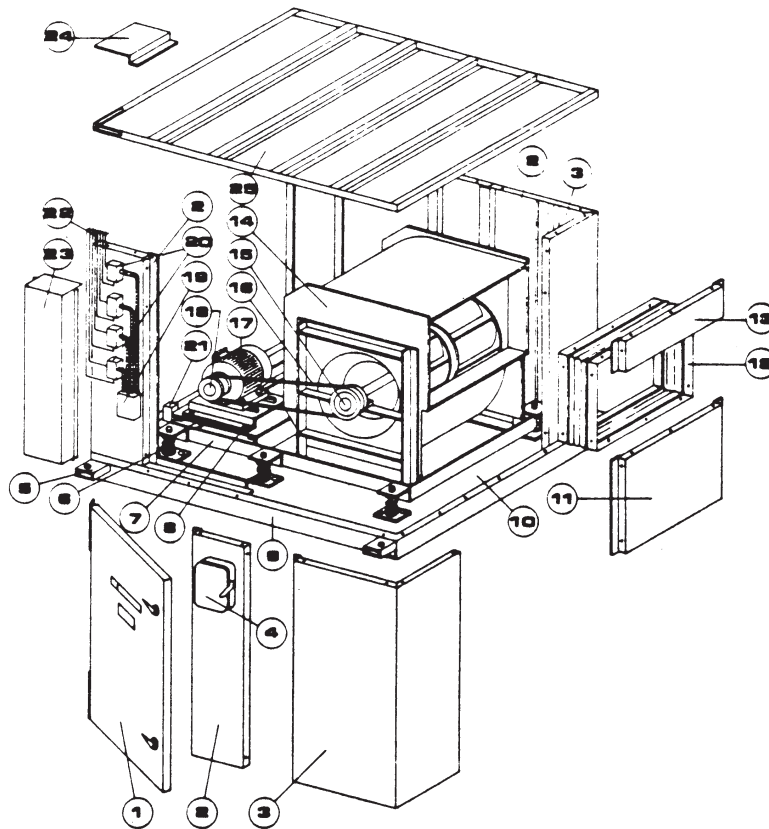
SETTING ECOLO TIME ON AND TIME OFF CYCLE

The Ecolo Unit is set to operate either

1. To set the Ecolo time on, press the "T-ON" button on the electronic text display once. Currently set value of ECOLO T-ON in seconds is displayed.
2. Press the "ENTER" button once, a blinking cursor appears.
3. Use the " ▲▼ " up and down arrows to set desired time for ecology ON cycle. Press "ENTER" again to finish.
4. To set the Ecolo time off, press the "T-OFF" button on the electronic text display once. Currently set value of ECOLO T-OFF in seconds is displayed.
5. Press the "ENTER" button once, a blinking cursor appears.
6. Use the " ▲▼ " up and down arrows to set desired time for ecology OFF cycle. Press "ENTER" again to finish.

EXHAUST FAN MODULE

1	Access Door	14	Fan
2	Side Panel	15	Fan Pulley
3	Corner Panel	16	Fan Belt
4	Disconnect Switch	17	Motor
5	Hanger or Lifting Brackets	18	Motor Pulley
6	Spring Isolators	19	Electrical Box Terminal Strip
7	Floating Steel Base	20	Pressure Switch (optional location)
8	Motor Slide Base	21	Firestat
9	Structural Base	22	Air Tubes for Pressure Switch (optional location)
10	Bottom Panel	23	Pressure Switch Box Cover (optional location)
11	Lower Fan Discharge Panel	24	Pressure Tube Cover (optional location)
12	Flexible Connection	25	Top Panel
13	Upper Fan Discharge Panel		



FAN TYPES

For all models, a double width double inlet Class 2 airfoil type fan is used. The motor and drive package is located in the exhaust airstream. All fan wheels are mounted to facilitate easy removal should adjustment or repairs be necessary.

NOTE: Ensure motor disconnect switch in exhaust fan housing is in OFF position prior to any service work.

FAN WHEEL REPLACEMENT

It is unlikely the fan wheel will require replacement. However, if the wheel requires balancing, it can normally be done in the field by a certified fan technician. Should the fan wheel require replacement, the work should only be performed by a Halton certified fan technician.

BEARING REPLACEMENT

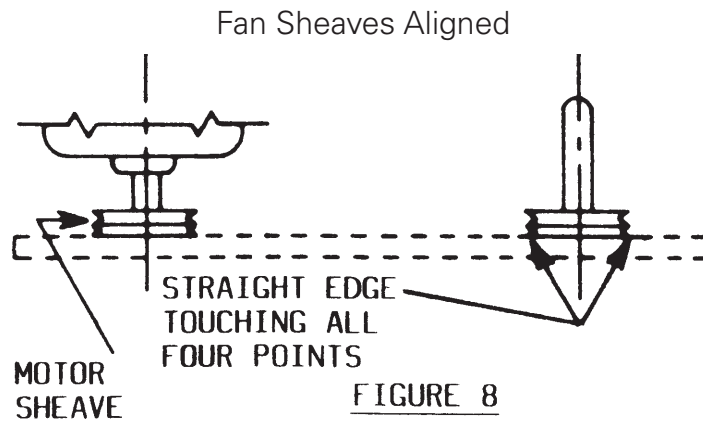
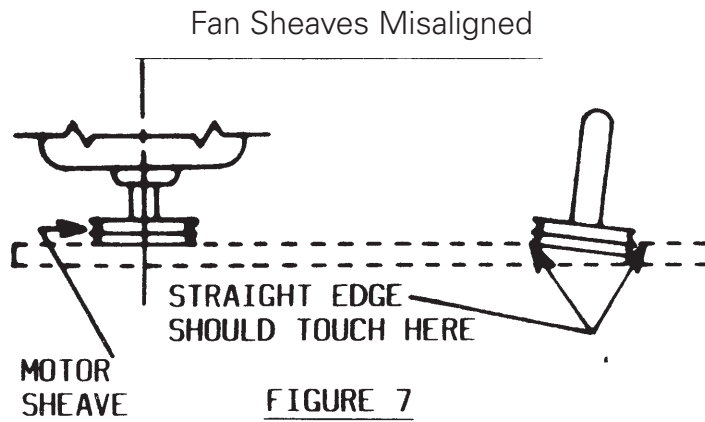
1. Remove belts and the fan sheave. To remove fan sheave, remove the cap bolts and screw them into the threaded holes in the bushing. Snug up all bolts then continue to tighten each cap bolt in half turn increments until the sheave comes loose from the bushing. The bushing and sheave should now slide off the fan shaft.
2. Loosen the set screws on the locking collars of bearing.
3. Remove the fan wheel and fan shaft by sliding the fan shaft out through the bearing collars. Polishing the fan shaft with emery cloth and some light lubrication on the fan shaft will make removal much easier.
4. Remove bolts, fastening the bearing to the top and bottom bearing base plates.
5. Re-install equipment in reverse order of removal. Care should be taken to properly tighten the set screws in the bearing locking collar' see chart for recommended tightening torque of set screws.
6. When replacing the fan sheaves, slide sheave and bushing onto the fan shaft and insert the cap bolts into the non-threaded holes of the bushing and screw into threaded holes in sheave. Tighten each cap bolt a half turn in rotation until tight.
7. Ensure proper belt tension and sheave alignment. The use of straight edge is recommended to ensure proper alignment and maximum efficiency.

Tightening Torque Recommended for Bearing Set Screws

Fan Shaft Diameter		Set Screw Tightening	
Inches	mm	(in.lb.)	(kgm.)
1	25	30	0.04
1 - 3/16	30	40	0.05
1 - 7/16	37	50	0.06
1 - 11/16	43	65	0.08
1 - 15/16	49	65	0.08
2 - 3/16	56	80	0.10
2 - 7/16	62	135	0.16

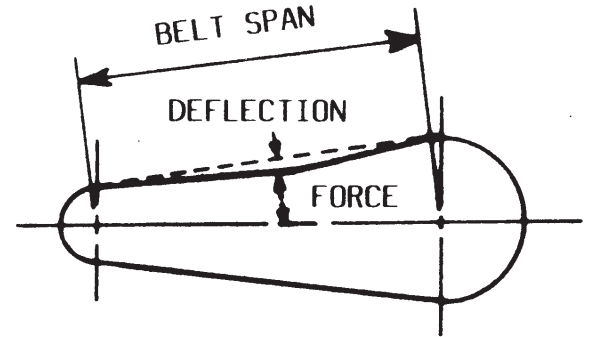
SHEAVE ALIGNMENT

Align the drive by the four-point method with a piece of string or a straight edge. The two sheaves will be aligned when two points (near and far) on the face of each of the sheaves touch the straight edge of the string when the string is a straight line. Refer to the figure below for correct alignment.



BELT ADJUSTMENT

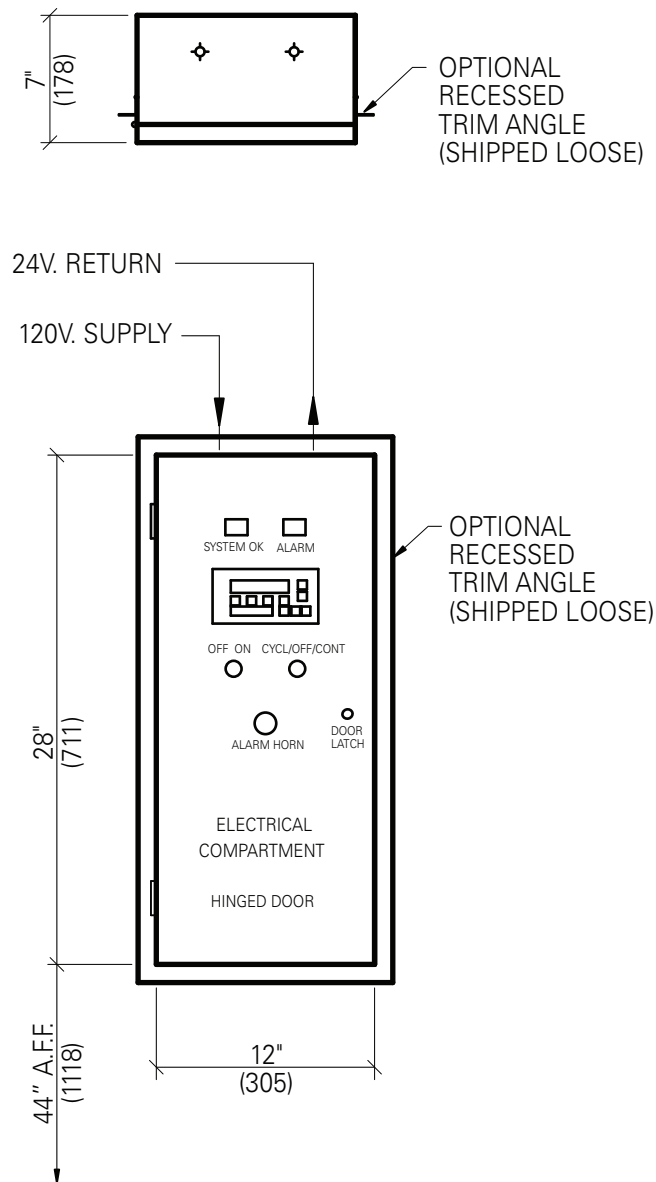
Measure the belt span, (see image). Using a spring scale, apply a perpendicular force to any one of the belts at the mid point of the span. Measure the force required to deflect any one of the belts 1/64" (.40mm) for every inch (25mm) of span length. For example, the deflection for a 32" (813mm) span would be 1/64" (.40mm) multiplied by 32, or 1/2" (13mm). The force required to deflect the belt is listed in the table below. Initially, tighten the belts to the values listed in column "Run-In Time". There will normally be a drop in tension during the first 24 to 49 hours of operation. During this "run in" period, the belts seat themselves in the sheave grooves and the initial stretch is removed. After a day or two, the drive should be stopped and another check made for the correct amount of tension. The tension should now compare with the values in column "Normal Time". If the force is below the level in column "Normal Time". The belts are too loose. If the force is greater than the high level, the belts are too tight. Readjust so that the deflection force is between the high and low value in column "Normal Time".



CONVENTIONAL BELT DEFLECTION FORCE

BELT	SMALL DIAMETER RANGE		PRIME MOVER BELTS			
			RUN-IN TIME		NORMAL TIME	
	Inches	mm	lbs.	kg.	lbs.	kg.
A	3.0 - 3.6	76 - 91	4-1/2	9.9	3	6.6
	3.8 - 4.8	97 - 122	5-1/4	11.6	3-1/2	7.7
	5.0 - 7.0	127 - 178	6-1/2	14.3	4-1/4	9.4
B	3.4 - 4.2	86 - 107	6-1/2	14.3	4-1/4	9.4
	4.4 - 5.6	112 - 142	8-1/4	18.2	5-1/2	12.1
	5.8 - 8.6	147 - 218	10-1/2	23.1	7	15.4

ECOLOGY CONTROL PANEL



CONTROL PANEL MODELS

- EPLV5 - 1 : w/WASH HOODS, w/ECOLO
- EPLV5 - 1A : w/WASH HOODS
- EPLV5 - 3 : w/DRY HOODS, w/ECOLO
- EPLV5 - 3A : w/DRY HOOD

In accordance to UL Standard S647, each filter component (grease and odor) shall have an interlock to prove the component is in place. Where any of these interlocks are interrupted, the cooking equipment shall not be able to operate, the fans (exhaust and re-circulation) shall be disabled.

TROUBLESHOOTING GUIDE

PROBLEM	PROBABLE CAUSE	SOLUTION
Unit not exhausting properly	<ul style="list-style-type: none"> a) Belts slipping or broken. b) Fire damper shut. Check ecology unit and exhaust hood. c) Plugged filter. d) Water level in exhaust hood too high. Drain plugged. e) Exhaust fan motor off on overload. f) Duct work or air outlet blocked. 	<ul style="list-style-type: none"> a) Tighten or replace belts. b) Replace fusible link or holding wire. Check cause. c) Replace filter. d) Unplug drain, check filter if wet. e) Reset and check amperage draw f) Remove obstruction.
No make-up air	<ul style="list-style-type: none"> a) Loose damper linkage causing both dampers to close. b) Loose or broken fan belts. c) Plugged air filter. d) Supply fan motor off on overload. e) Separate supply air system not operating. 	<ul style="list-style-type: none"> a) Tighten and reset linkage b) Tighten or replace belts. c) Replace filters. d) Reset and check amperage draw. e) Recommend to owner to have system serviced.
Unit will not start	<ul style="list-style-type: none"> a) No power. b) Fuses blown. c) Off on overload heater in magnetic starter. d) 120 volt control transformer fuse. e) Blown 5 amp. fuse in exhaust hood wash control panel. f) Defective exhaust fan motor. g) Fan switch on Ecology control panel in "OFF" position. h) Control switch on exhaust hood panel in "WASH" position 	<ul style="list-style-type: none"> a) Check power supply. b) Replace fuse, check for cause of blown fuse. c) Reset overload and take amperage reading to be sure motor is not overloaded. A blown fuse can cause an overload to trip. d) Replace fuse; if blown, check for cause in 120 volt circuit incl. exhaust hood wash control panel. e) Replace fuse. Check for cause in detergent pump or solenoid coils. f) Replace motor. Check for cause bearings, alignment, motor burn out. Check overload settings with name plate. g) Turn to "ON" position. h) Turn to "RUN" position

TROUBLESHOOTING GUIDE

PROBLEM	PROBABLE CAUSE	SOLUTION
Filter alarms triggering	<ul style="list-style-type: none"> a) Plugged filter. b) Broken pressure switch air tube. c) Loose pressure switch fitting. d) Condensation in pressure switch tubing. 	<ul style="list-style-type: none"> a) Check filter. Replace if required What setting did it alarm at? Adjust pressure switch if required. b) Repair break. Check for cause of break. c) Tighten fitting. d) Blow out condensation from air tube. For outdoor installation check to see if heat wire is installed and operating. If not installed, recommend to the owner that it be installed.
Unit starts, then shuts down	<ul style="list-style-type: none"> a) Filter not seated properly b) Broken or loose pressure switch air tube. c) Exhaust fan belt slipping (not moving enough air). d) Timer not set correctly. e) Defective timer. f) Off on overload heaters. g) Overall pressure switch #4 not set properly. 	<ul style="list-style-type: none"> a) Seat filters. b) Repair break or tighten fitting. c) Tighten or replace fan belts. d) Set time for 60 seconds. e) Replace timer. If burnt out it will have burn mark on top right side. f) Check, reset and check amperage draw. g) Adjust pressure switch setting.
No odor control and/or spraying action	<ul style="list-style-type: none"> a) No power to compressor b) No fluid from nozzle. c) Compressor too hot. d) Supply tube not connected/ loose or cracked. 	<ul style="list-style-type: none"> a) Check power to Compressor. b) Check condition of orifice, check condition of liquid supply line at foot valve. c) Check amperage, verify spray time setting. Check for adequate venting. d) Re-connect tube or replace.

START UP OPERATING INSTRUCTIONS

IMPORTANT: Initial system start-up and certification by factory authorized personnel only. Operating system prior to certification will void warranty.

- Turn on main disconnect switch at EcoloAir fan.
- The EcoloAir filter unit is designed to operate with the following pressure drops across each filter stage.

1) Pre Filter	.2" to .75"
2) Medium Efficiency Filter	.4" to 1.25"
3) High Efficiency Filter	.75" to 2.0"

When the pressure drop for each filter bank exceeds the upper limits, an audible/visual alarm will sound and activate a pilot light.

The alarm is a warning only, and does not shut the system down. The alarm can be silenced by pushing the alarm reset button in the centre of the Ecology panel.

- There are two other alarm conditions:
 - 1) "A filter not in place" sensing system.
 - 2) A fire state to sense excessive temperatures in the duct. Should either alarm be triggered, the audible/visual alarm will sound, an indicator light labeled "filters overall" will be illuminated, and the system will shut down. After the cause of the alarm has been corrected, the system can be restarted by pushing the reset button and also turning the main disconnect switch to the "OFF" position. then back to the "ON" position.

MAINTENANCE INSTRUCTIONS

NOTE: Heavy hamburger type operations require extra maintenance and frequent filter changes. We recommend a maintenance contract be set up for this type of operation.

MONTHLY:

- Check condition of air filters. Replace if necessary.
- Check odor control liquid level. Replace if necessary.
- Check odor nozzle condition (check for debris)

QUARTERLY: (to be performed by a qualified service agent).

- Check belt tension at exhaust fan. Tighten as required.
- Check belt alignment.
- Lubricate motor bearings.
- Lubricate fan bearings.
- Check contacts on motor starter in control panel.
- Check amperage draw of fan motor.
- Check to see if the overall filter warning system operates correctly. This can be done by removing the high efficiency filters and starting the system.
- Check fusible link on the fire dampers (filter section)

When replacing belts when multiple belts are used, they **MUST ALL BE REPLACED**, as they are a matched set.

ROUTINE MAINTENANCE

1. A preventive maintenance program is an important aspect of an effective safety program. Consult the manufacturing or other qualified service agents with question concerning changes observed during periodic inspections and routine maintenance.
2. The fan manufacturer's operating and maintenance recommendations, as well as the components manufacturer's instructions (such as motor, bearing, drives, etc.) should be strictly followed.
3. **Maintenance should always be performed by experienced and trained personnel who are aware of the hazards associated with rotating equipment.** Do not attempt any maintenance on a fan unless the fan power supply has been locked out and tagged out and the impeller has been secured.
4. When performing maintenance functions which include disassembly of the fan, careful consideration should be given to the size, weight center of gravity, and lifting means of the fan components. It should also be noted that the outboard bearing on some fans such as arrangements 1,8,9 and 10 is often cap-loaded. Removal of the securing means may result in a sudden change in impeller position.
5. Historical data is often the best indicator for determining the operational condition of the fan. Maintenance logs which include lubrication, vibration levels, temperature levels, power requirements, inspection, and other pertinent records should be maintained and consulted as necessary when assessing the condition of the fan.
6. Under normal circumstances, handling clean air, the system should require cleaning only once a year. However, the fan and system should be checked at regular intervals to detect any unusual accumulation.
7. The fan impeller should be specially checked for build-up of material or dirt which may cause an imbalance with resulting undue wear on bearings and belt drives. A regular maintenance program should be established as needed to prevent material build-up.
8. Periodic inspection of the rotating assembly should be made to detect any indication of weakening of the rotor because of corrosion, erosion, or metal fatigue. Where signs of deterioration are found, lock out and tag out the impeller until the unit had been inspected and approved by a qualified consultant.

START UP CHECK LIST

- 1.1 Before putting any fan into initial operation, the manufacturer's instructions should be followed. Transportation, handling, and installation can cause fasteners to loosen, and cause misalignment of fan components. Carefully follow this check list when commissioning equipment.
- 1.2 Lock out the primary and all secondary power sources.
- 1.3 A complete inspection should be made of all the ductwork and the interior of the fan. Make certain there is no foreign material which can be drawn into or blown through the fan or ductwork. Appropriate protective measures and safety practices should be observed when entering or working within these areas. These measures might include the use of goggles, respirators, or other personal protective devices.
- 1.4 Make sure the foundation or mounting arrangement and the duct connections are adequately designed and installed per drawings and in accordance with recognized acceptable engineering practices and with the fan manufacturer's recommendations.
- 1.5 Check and tighten all bolts, fasteners, and set screws as necessary .
- 1.6 Check the fan assembly and bearings for proper grounding to prevent static electricity discharge.
- 1.7 Ensure power and drive components such as motor starter, variable frequency drive, or hydraulic power unit are properly sized, matched , and connected to the fan.
- 1.8 Check bearing for recommended lubricant and lubrication amount.
- 1.9 Spin the rotation assembly to determine whether it rotates freely, without hitting anything, and is not grossly out of balance.
- 1.10 Inspect impeller for proper rotation for the fan design.
- 1.11 Check alignment of drives and all other components.
- 1.12 Check the belt drive for proper sheave selection and installation and make sure the sheaves are not reversed (excessive speeds could develop).
- 1.13 Check for recommended belt tension.
- 1.14 Properly secure all safety guards.
- 1.15 Assure that all appropriate warnings have been put in place.
- 1.16 Secure all access doors to the fan and ductwork.

START UP CHECK LIST Continued...

- 1.17 Momentarily energize the fan to check the direction of rotation. Listen as the fan coasts to a stop for any unusual noise, identify the source, and take corrective action as necessary.
- 1.18 Switch on the electrical supply and allow the fan to reach full speed. Check carefully for:
 - a) Excessive vibration
 - b) Unusual noise
 - c) Proper belt alignment
 - d) Proper lubrication
 - e) Proper amperage, voltage, or power values.
 - f) If any problem is indicated, SWITCH OFF IMMEDIATELY.
 - g) Lock out the power supply. Secure the fan impeller if there is a potential for wind milling. Check carefully for the cause of the trouble, correct as necessary, and repeat check list procedure.
- 2.0 Even if the fan appears to be operating satisfactorily, shut down after a brief period, lock out the power supply, and recheck item 1.5 through 1.17 as the initial start-up may have loosened the bolts, fasteners, and set screws.
- 3.0 The fan may now be put into operation, but during the first eight (8) hours of running, it should be closely observed and checked for excessive vibration and noise. At this time checks should also be made of motor input current and motor and bearing temperatures to ensure that they do not exceed manufacturer's recommendations.
- 4.0 After eight (8) hours of operation, the fan should be shut down and the power locked out. Check list items 1.5 through 1.17 should be inspected and adjusted, if necessary.
- 5.0 After twenty-four (24) hours of satisfactory operation, the fan should be shut down (locked out) and the drive belt tension should be readjusted to recommended tension.
- 6.0 After commissioning and start-up, the fan should be operated and maintained in accordance with the manufacturer's and component manufacturer's recommendations.

For any questions, please call Halton Service Network at US (270) 237-5600 or Canada (905) 624-301.

HALTON LIMITED WARRANTY

Halton ("Manufacturer"). Warrants only to its direct purchasers and to no others, that all products manufactured by the Manufacturer shall be free from defect in materials and workmanship for a period of twelve (12) months from the date of the original installation and start-up or eighteen (18) months from date of shipment, whichever occurs first. All products sold but not manufactured by Manufacturer will be warranted for a period of twelve (12) months from date of shipment.

For products manufactured by the Manufacturer we agree to pay any reasonable labor costs necessary to repair or replace, at Manufacturers option, defective parts or materials for a period of twelve (12) months from date of original installation and start-up or eighteen (18) months from date of shipment, whichever occurs first. All labor costs subject hereto shall be performed during standard work hours at straight-time rates.

For products sold but not manufactured by the Manufacturer we agree to pay any reasonable labor costs necessary to repair or replace, at Manufacturers option, defective parts or materials for a period of (90) days from date of original installation and start-up or (12) months from date of shipment, whichever occurs first. All labor costs subject hereto shall be performed during standard work hours at straight-time rates.

Purchaser shall pay incurred premium labor charge, including overtime, weekends and holidays. Travel time, service charges, miscellaneous tools, material charges, and labor charges resulting from inaccessibility of equipment will not be paid by Manufacturer.

This **LIMITED WARRANTY SHALL APPLY ONLY** to products that have been installed and maintained in accordance with the installation and Care Instruction Manuals. Purchaser shall be solely responsible for adhering to the instructions and procedures set forth in the said instruction manuals.

This **LIMITED WARRANTY SHALL NOT BE APPLICABLE** to any damage or defect resulting from fire, flood, freezing or any Act of God, abuse, misuse, accident, neglect or failure to adhere to all instructions set forth in the installation and Care Instruction Manuals. Furthermore, this limited warranty shall not apply to any product that has been altered, unless such alteration has been approved in writing by a duly authorized representative of the manufacturer. In no event shall the manufacturer be liable for any loss, expense, personal injury or consequential damage, of any kind or character, as may result from a defect in material, and/or workmanship, however caused.

EXCEPT AS IS EXPRESSLY SET FORTH IN THIS LIMITED WARRANTY, MANUFACTURER MAKES NO WARRANTY OF MARKETABILITY FOR FITNESS OR ANY PARTICULAR PURPOSE. NEITHER DOES MANUFACTURER MAKE ANY WARRANTY, EXPRESSED OR IMPLIED, WITH RESPECT TO PRODUCTS SOLD BY MANUFACTURER OR AS TO THE USE THEREOF.

Halton Company

101 Industrial Drive, Scottsville, 42164 USA
Tel: 270-237-5600 Fax: 270-237-5700
Website address www.haltoncompany.com

Halton Indoor Climate Systems, Ltd.

1021 Brevik Place • Mississauga, ON L4W 3R7 CANADA
Tel: 905-624-0301 Fax: 905-624-5547
Website address www.haltoncanada.com

The logo for Halton, featuring the word "Halton" in a bold, blue, sans-serif font.