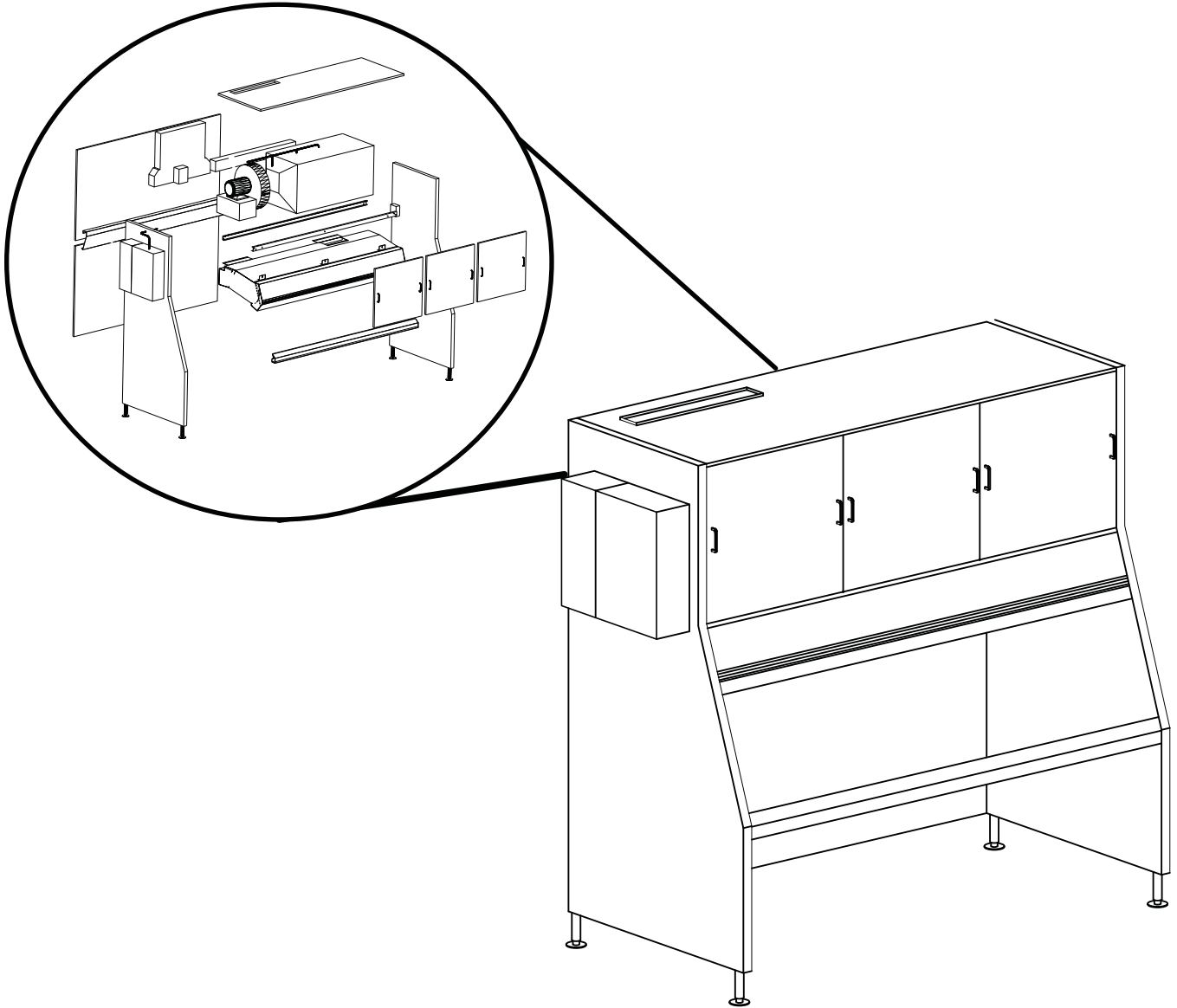


Operators Manual

Assembly Manual



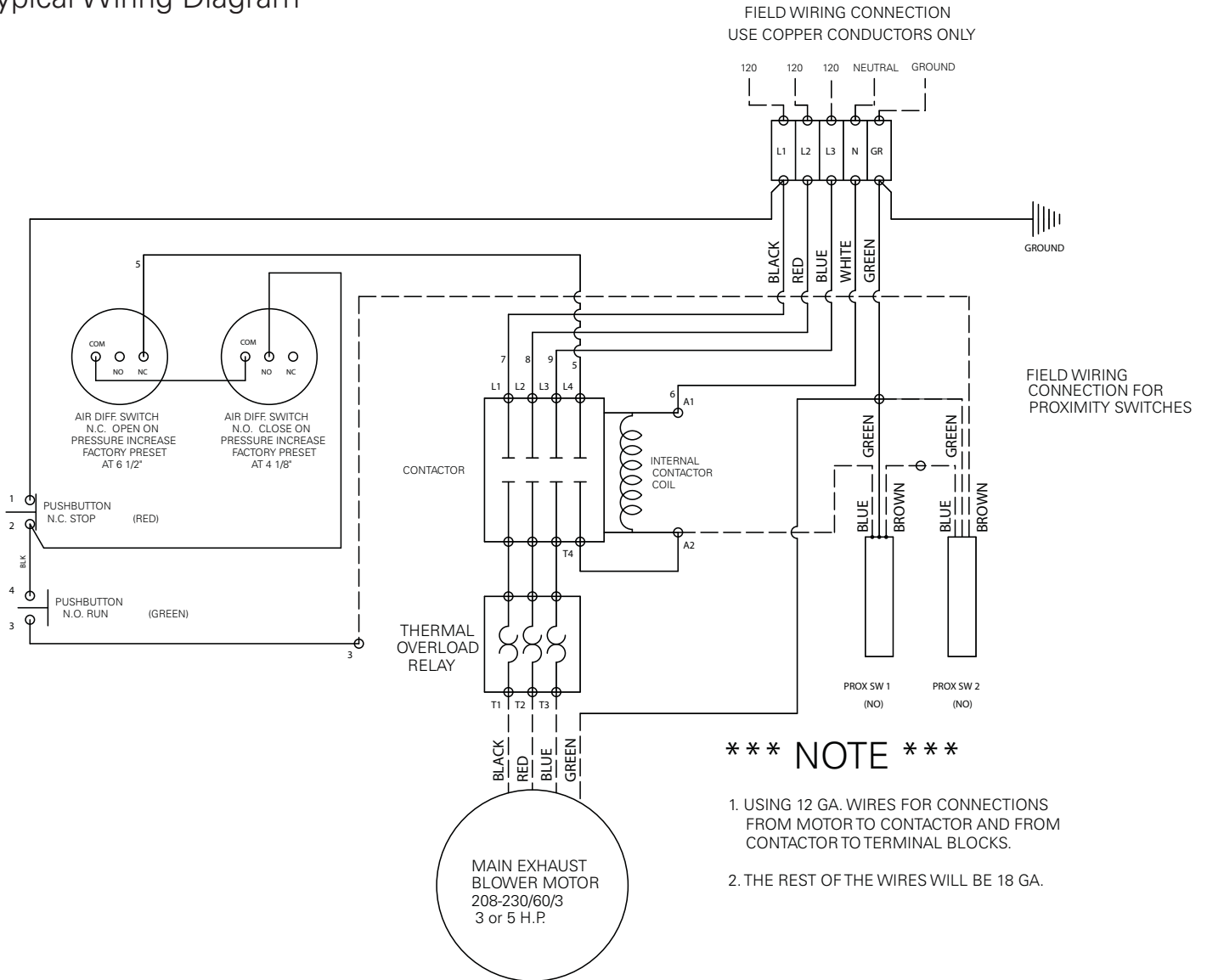
**CanVent (CVM)
Ductless Ventilation**



Halton
CARE FOR INDOOR AIR

ELECTRICAL INFORMATION

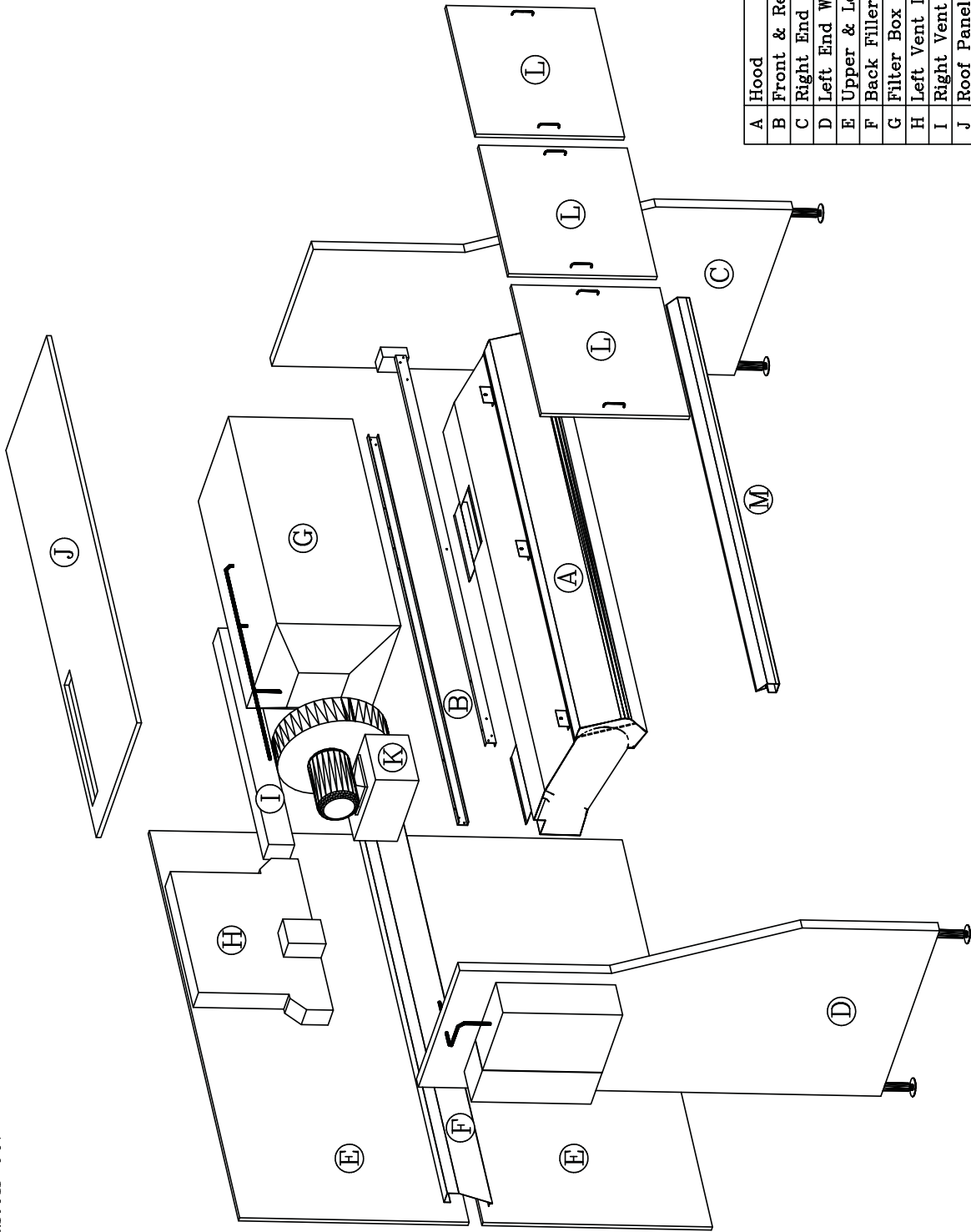
Typical Wiring Diagram



Instructions:

1. This product may be operated with a permanent electrical connection only.
2. Refer to above electrical diagram for connection details.
3. This product must be installed to conform to all National and local electrical codes.
4. This product must be installed to conform to NFPA 96 requirements.
5. Suggested circuit breaker size: 110v, 35 amp, 1 phase system - 45 amp breaker
208/230V, 10 amp, 3 phase system (3hp motor) - 15 amp breaker
208/230V, 13 amp, 3 phase system (5hp motor) - 20 amp breaker
460V, 5 amp, 3 phase system (5hp motor) - 10 amp breaker

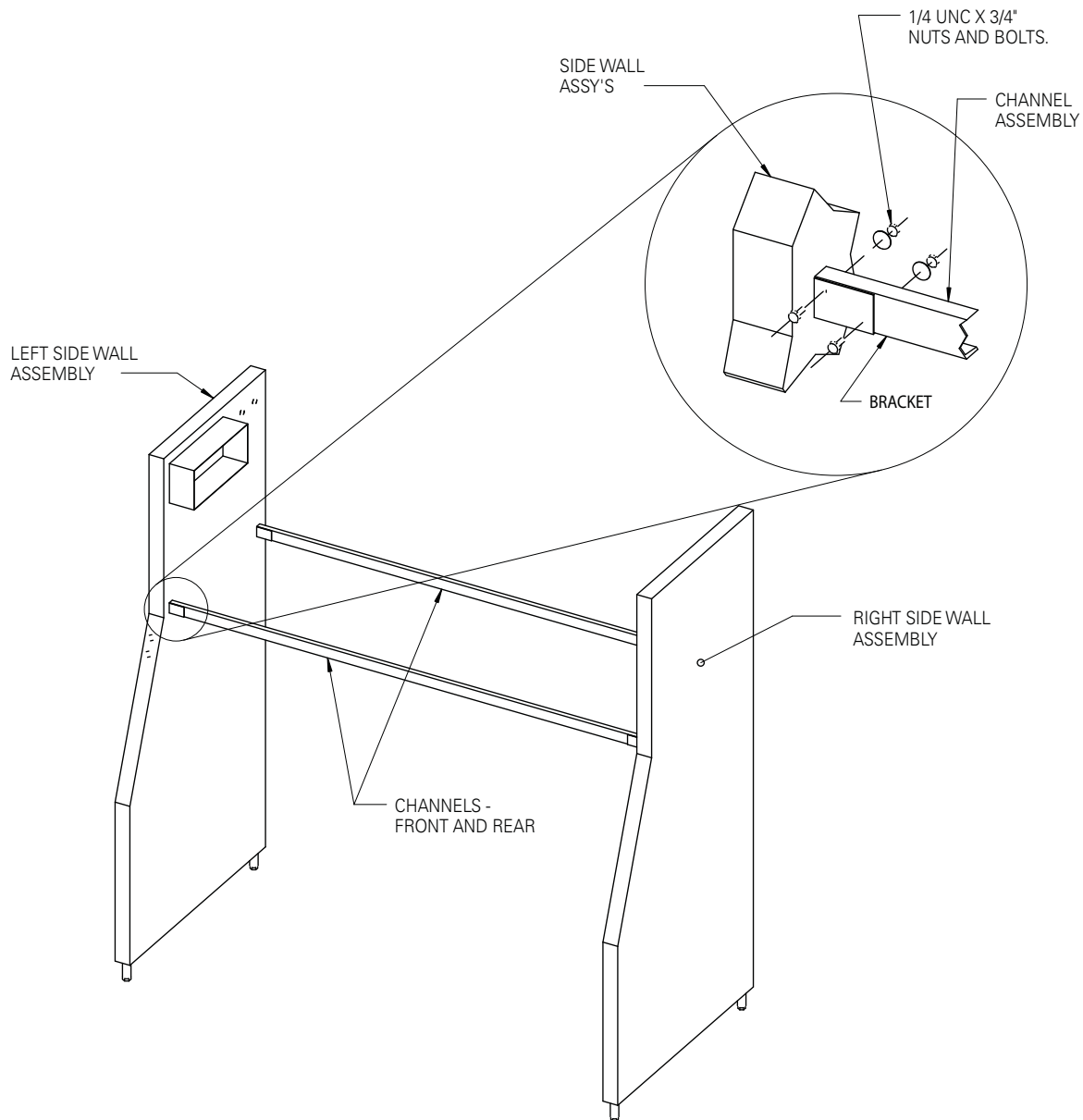
Exploded View:
 Typical CanVent Sub Assemblies as Shipped from
 Factory. To be field installed by other parties
 than Halton Co.



A	Hood
B	Front & Rear Channels
C	Right End Wall Assy
D	Left End Wall Assy
E	Upper & Lower Rear Wall
F	Back Filler Section
G	Filter Box
H	Left Vent Duct
I	Right Vent Duct
J	Roof Panel
K	Motor & Fan Assembly
L	Front Panels
M	Air Bar

DWG: 8550
 Date: 10/23/01

STEP 1



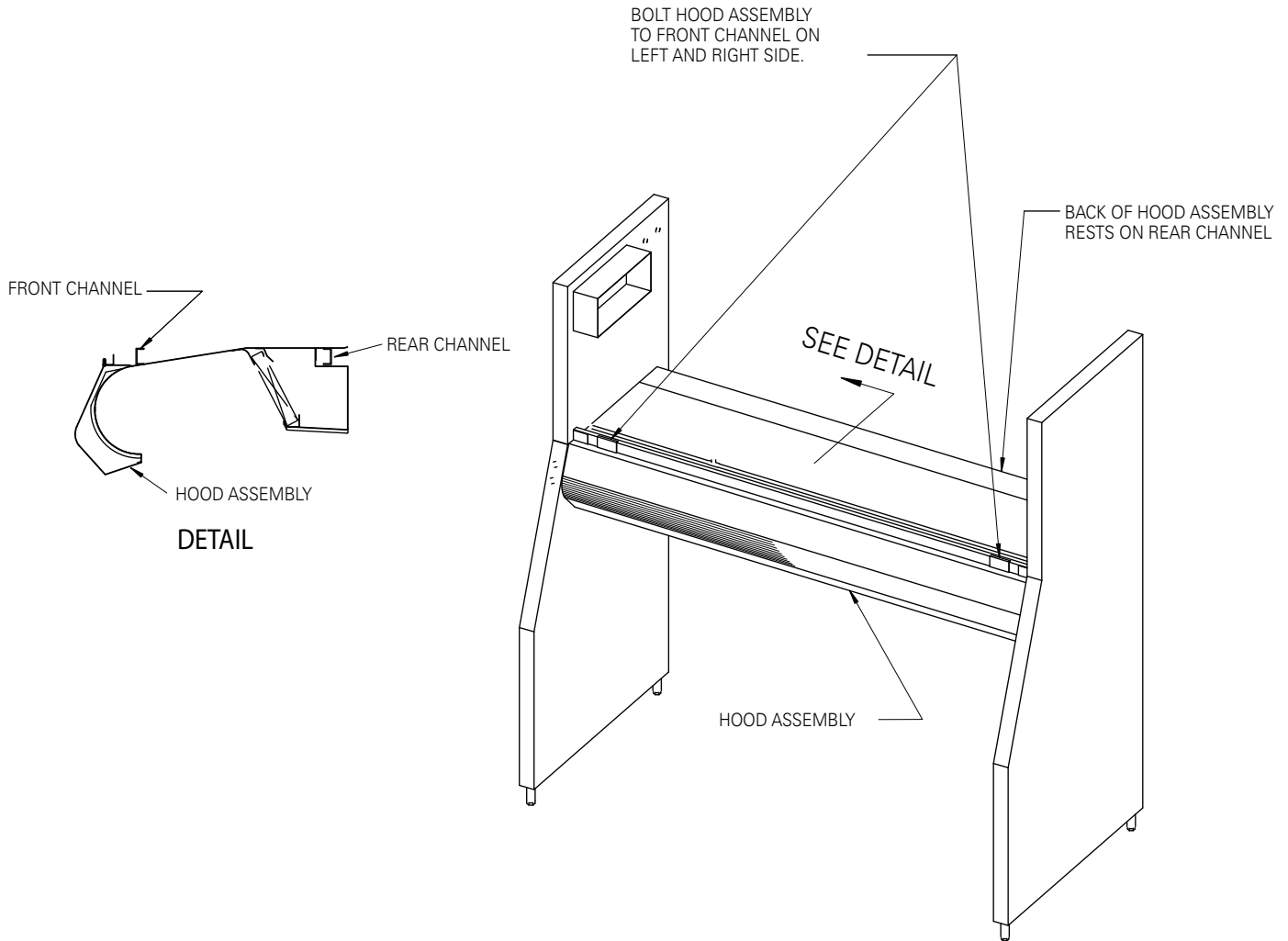
Instructions:

1. Stand right and left side wall assemblies upright.
2. Bolt rear channel in place with flat of channel toward rear of unit.
3. Install front channel and loosely bolt left side in place. **Note: Do not bolt right side at this time.**
4. Spread right side out approximately 1"

Parts Required

Description	QTY
Right Side Wall Assembly	1
Left Side Wall Assembly	1
1" x 2" Channels	2
1/4 UNC x 3/4" bolts	6
1/4 flat washer	6
1/4 UNC nuts	6

STEP 2



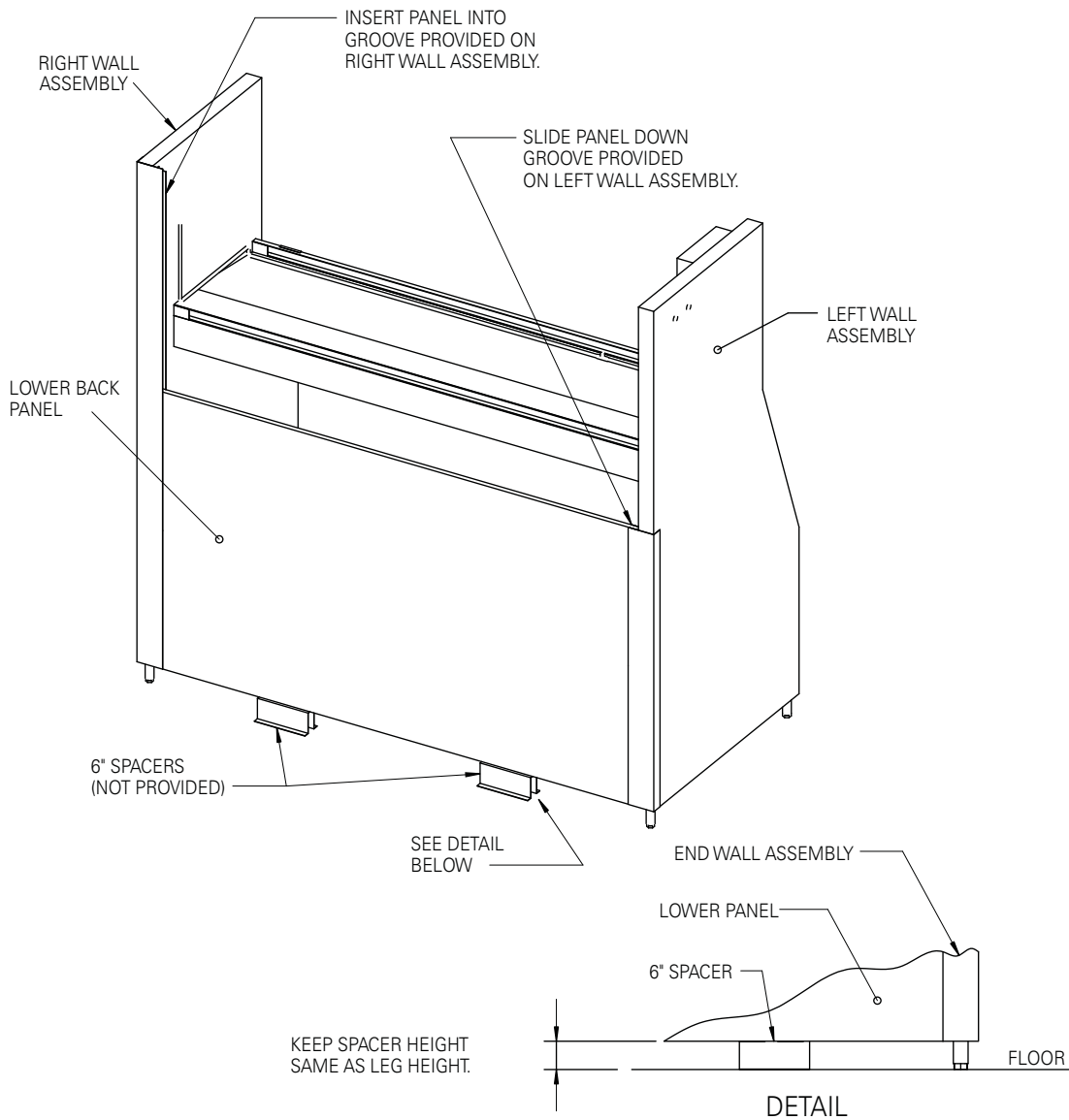
Instructions:

1. Insert back of hood assembly into rear channel.
2. Loosely bolt hood assembly onto front channel.
3. Using a pipe clamp, pull right and left side wall assemblies together, removing all clearances.
4. Level and true the assembly
5. Bolt right side of front channel in place.
6. Tighten left side at front channel in position.
7. Tighten hood assembly bolts in position

Parts Required

Description	QTY
Hood Assembly	1
1/4 UNC x 3/4" bolts	4
1/4 flat washer	4
1/4 UNC nuts	4

STEP 3



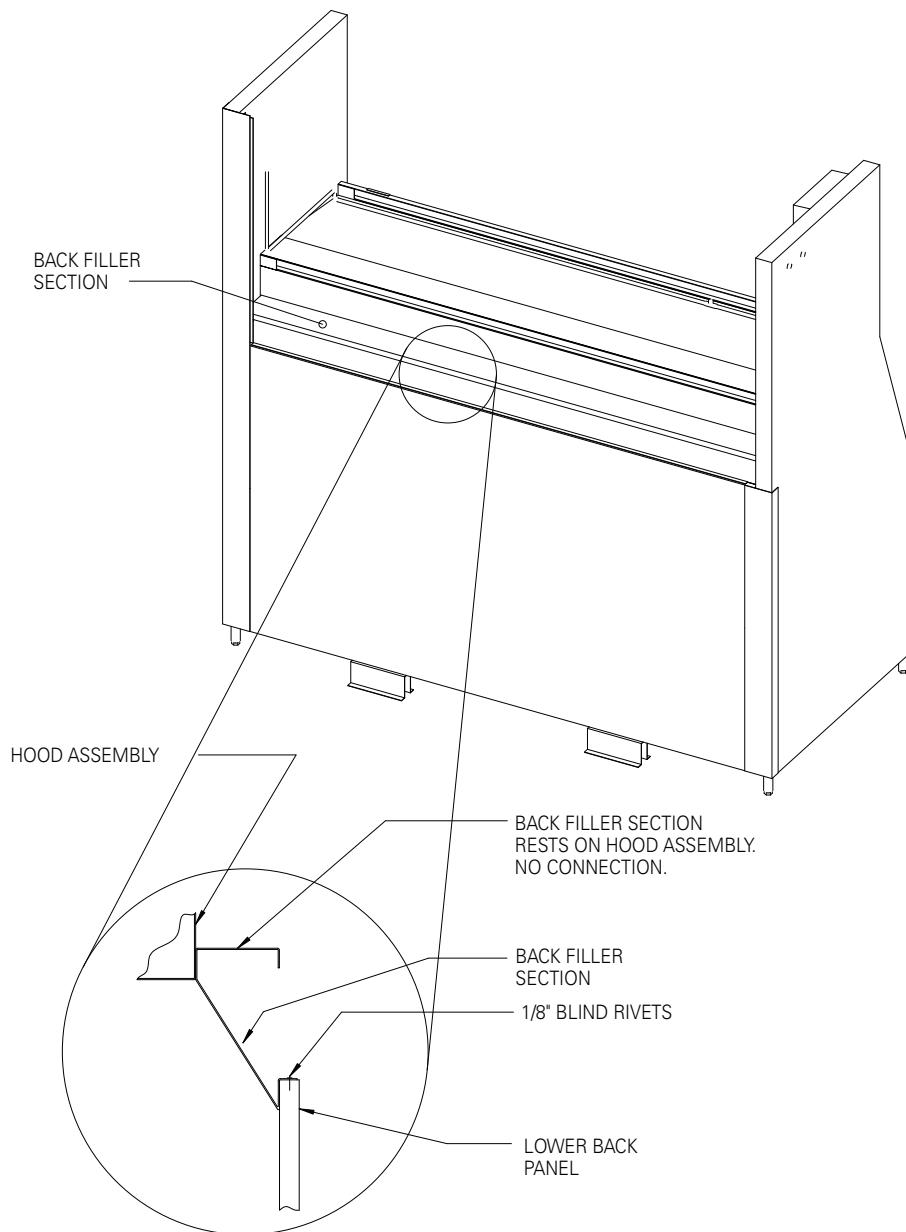
Instructions:

1. Set spacers (not provided) on floor, equally spaced, between the rear of the right and left wall assemblies. Keep in line with grooves provided on walls. (See image above)
2. Install lower panel. Insert panel into the grooves on the right wall Assembly slightly above the groove on the left wall assembly slide the panel down the groove on the Left wall assembly and let it rest on the spacers.

Parts Required

Description	QTY
Lower Back Panel	1
6" Spacers	2

STEP 4



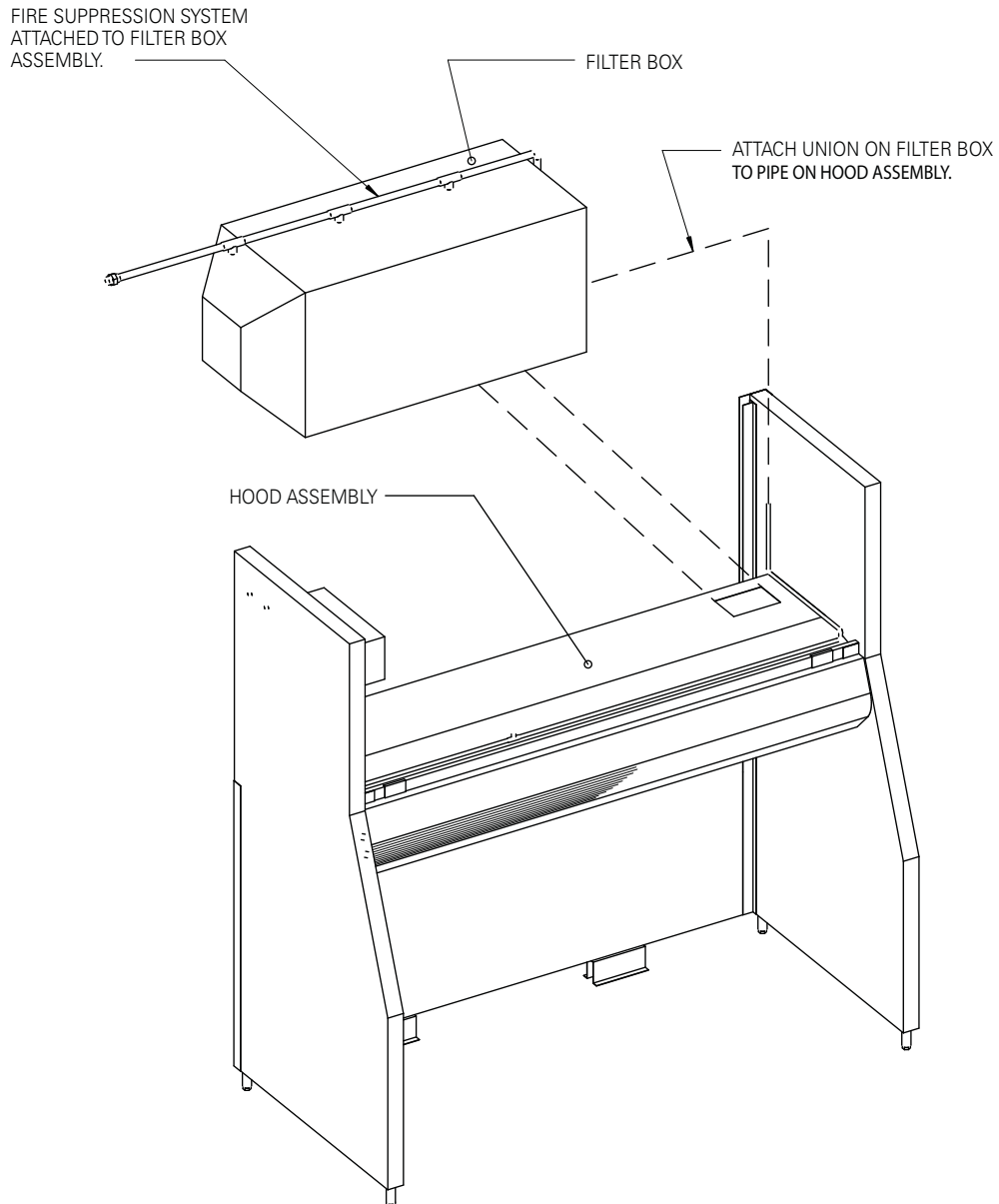
Instructions:

1. Install stainless steel back filler section. Use 1/8" blind rivets provided to fasten to lower back panel. Back of back filler section rests on hood assembly. See diagram above.

Parts Required

Description	QTY
Back Filler Section	1
Blind Rivets	4

STEP 5



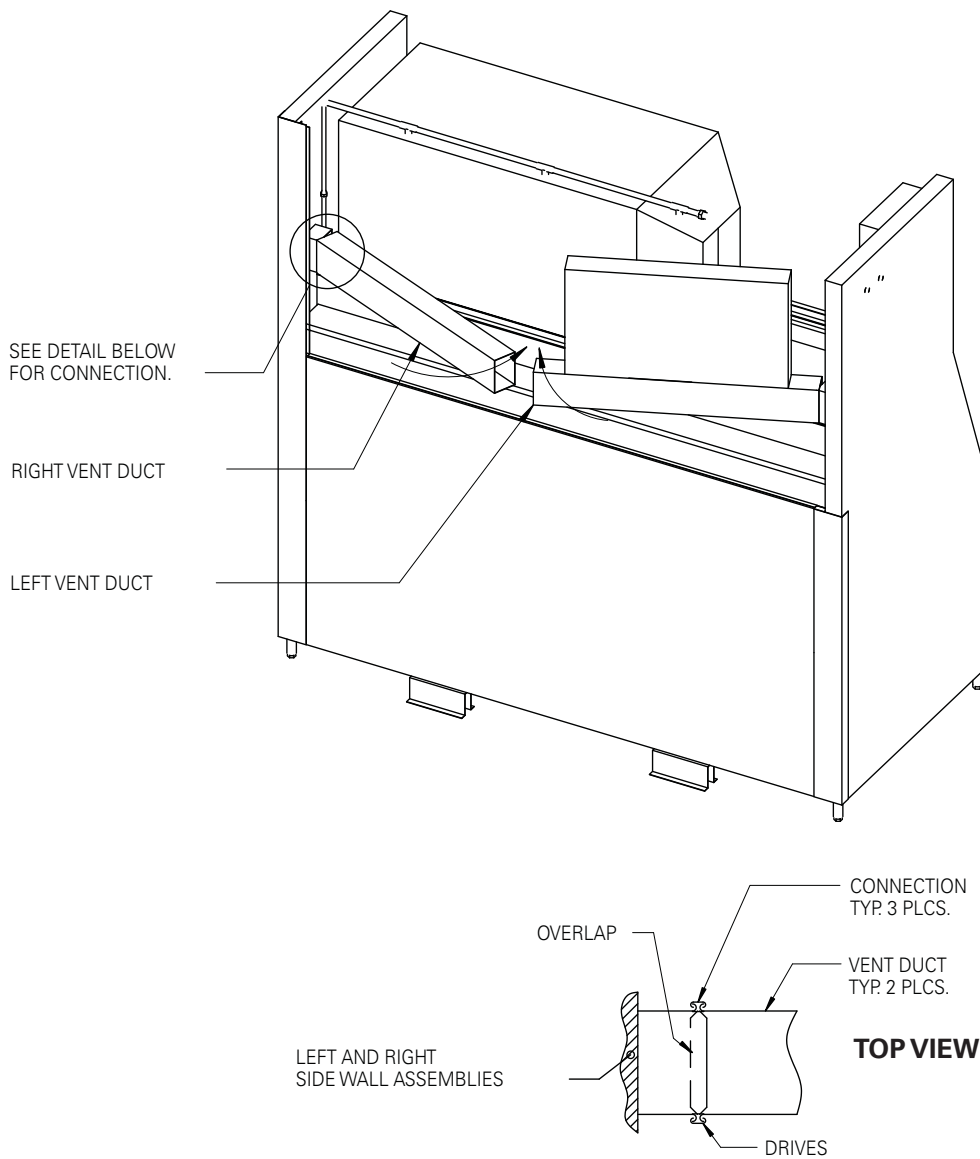
Instructions:

1. Install Filter Box into position.
 - a. Align exhaust duct on filter box with exhaust hole on the hood assembly. Verify gasket seal is in position.
 - b. Tighten down with bolts provided.
 - c. Thread pipe, attached on hood assembly, into union provided on filter box.
 - d. Tighten union after filter box is in position as shown above.

Parts Required

Description	QTY
Filter Box	1
1/4 UNC bolts	10

STEP 6



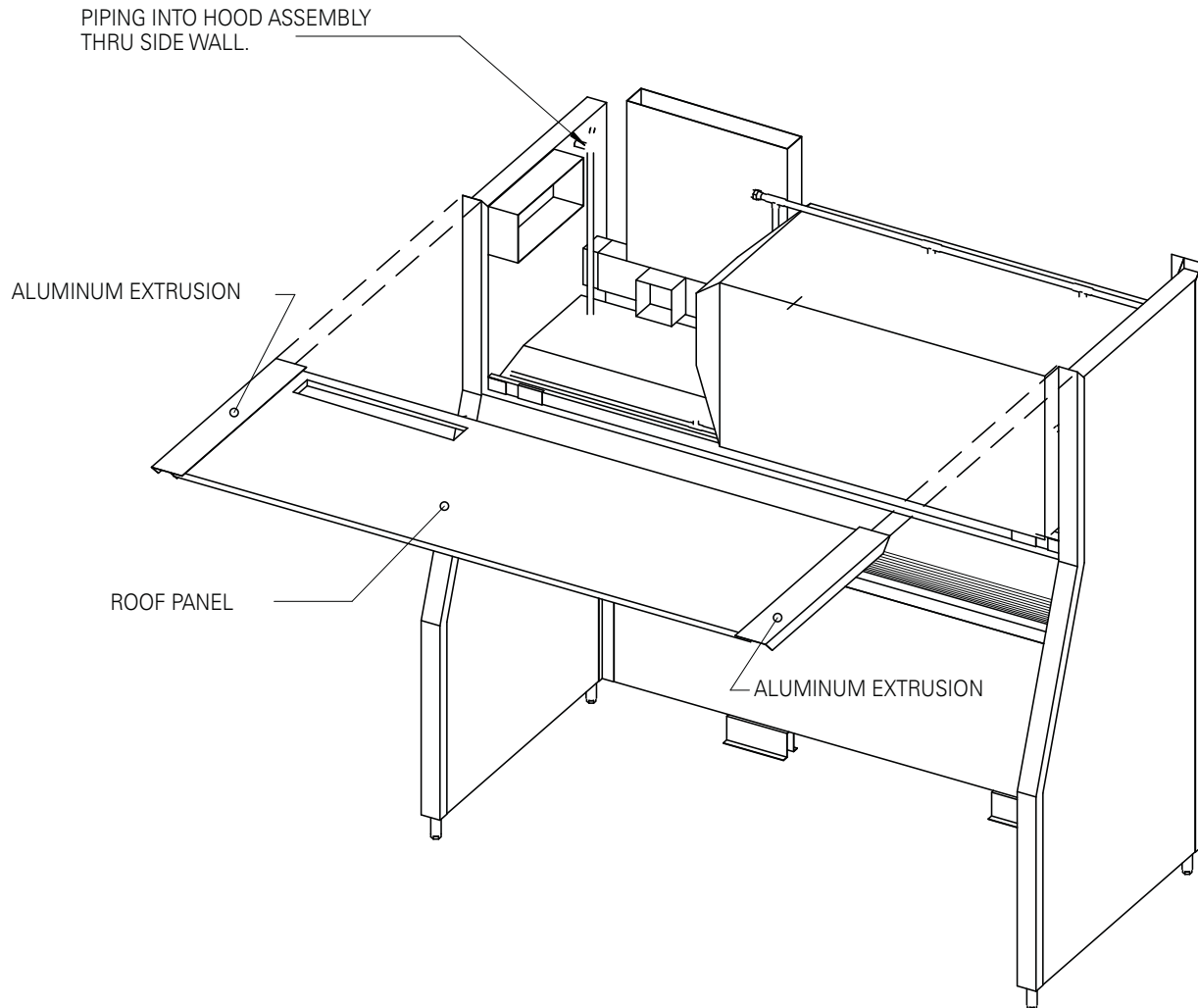
Instructions:

1. Place left vent duct into left side wall assembly exhaust air inlet. Insert rear drive cleat.
2. Place right vent duct into right side wall assembly exhaust air inlet. Insert rear drive cleat.
3. Pull ducts outward until center joint can be started, then push inward to complete joint. Install remaining drive cleats.

Parts Required

Description	QTY
Drives	6
Left Vent Duct	1
Right Vent Duct	1

STEP 7



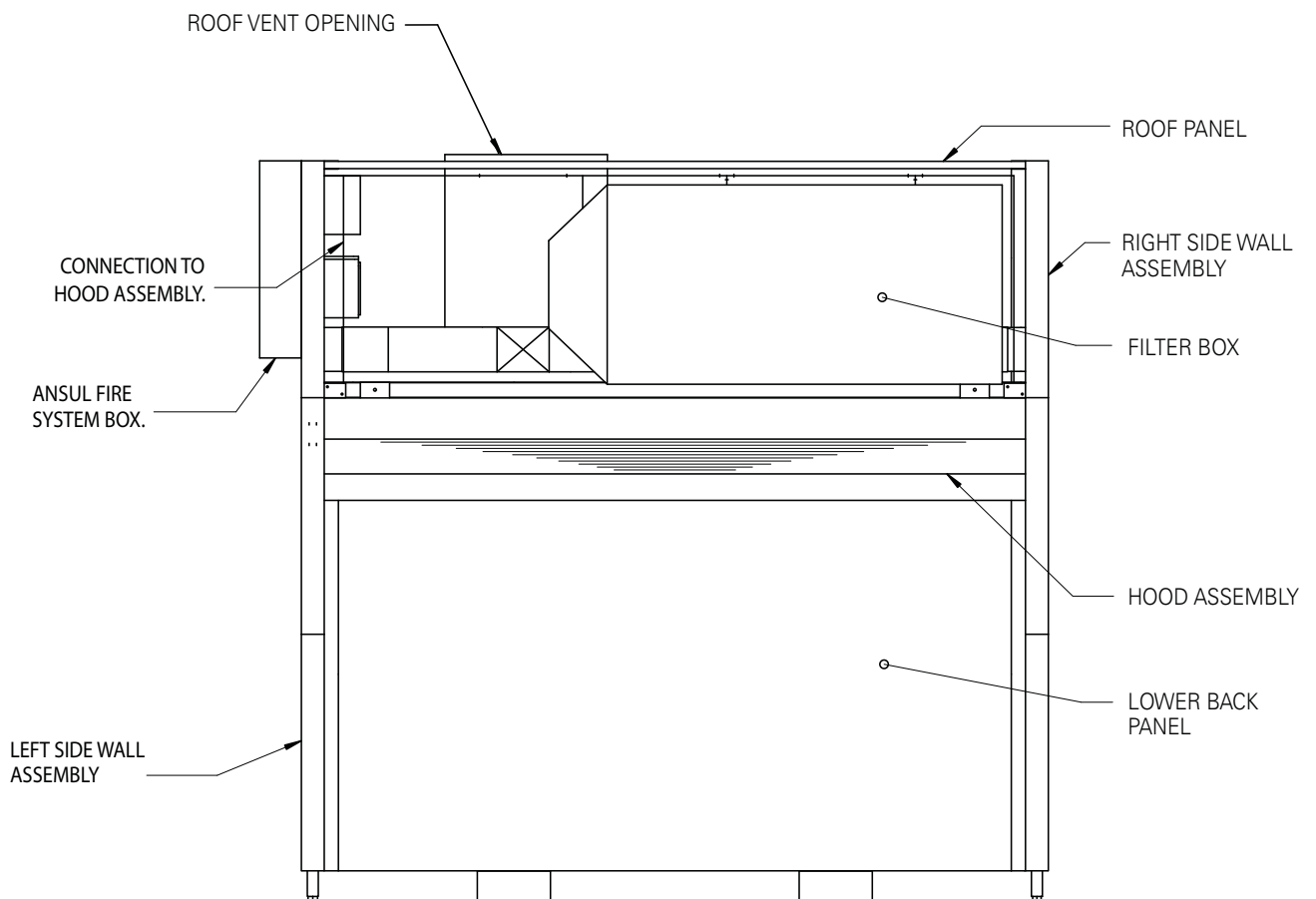
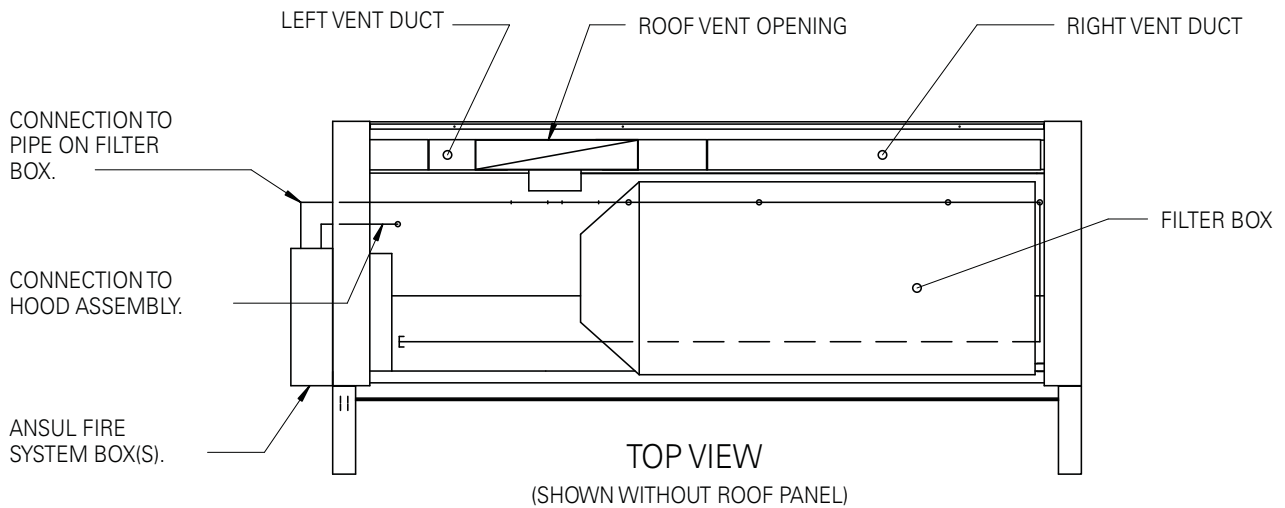
Instructions:

1. Slide top of wall aluminum extrusions onto roof panel prior to installing roof panel. Temporarily hold in place.
2. Lift roof panel into place from front onto the top of the left and right wall assemblies.
3. Fasten roof panel assembly in place using #8 screws into the end wall's top rails.
4. Thread piping from left end wall into union provided on filter box assembly and tighten.

Parts Required

Description	QTY
Roof Panel	1
Aluminum Extrusion	2
#8 x 3/4" Screws	4

STEP 8



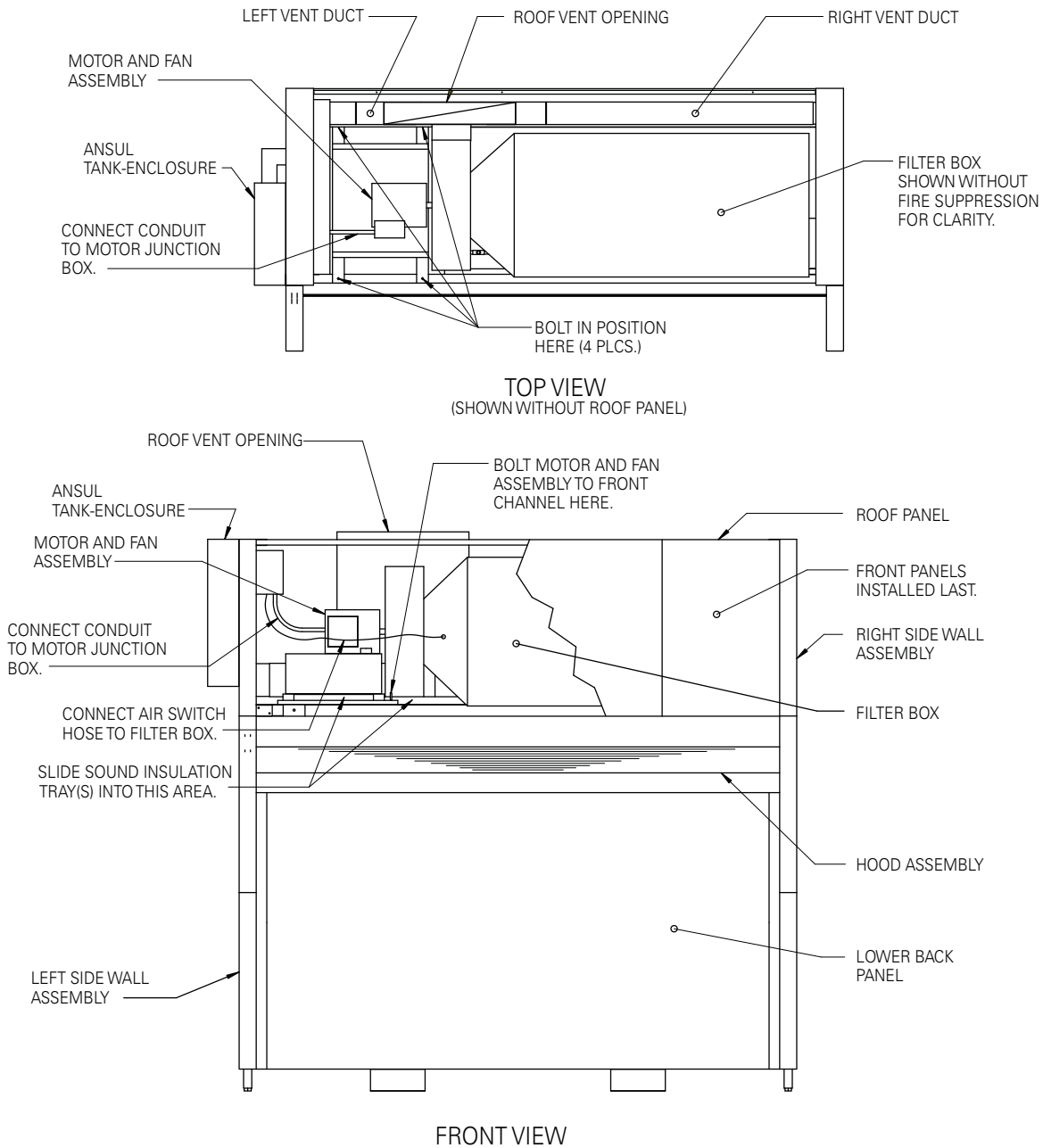
Instructions:

1. Complete installation of fire suppression system.
 - a. Complete piping to hood assembly.

Parts Required

Description	QTY
Piping	As Req'd

STEP 9



Instructions:

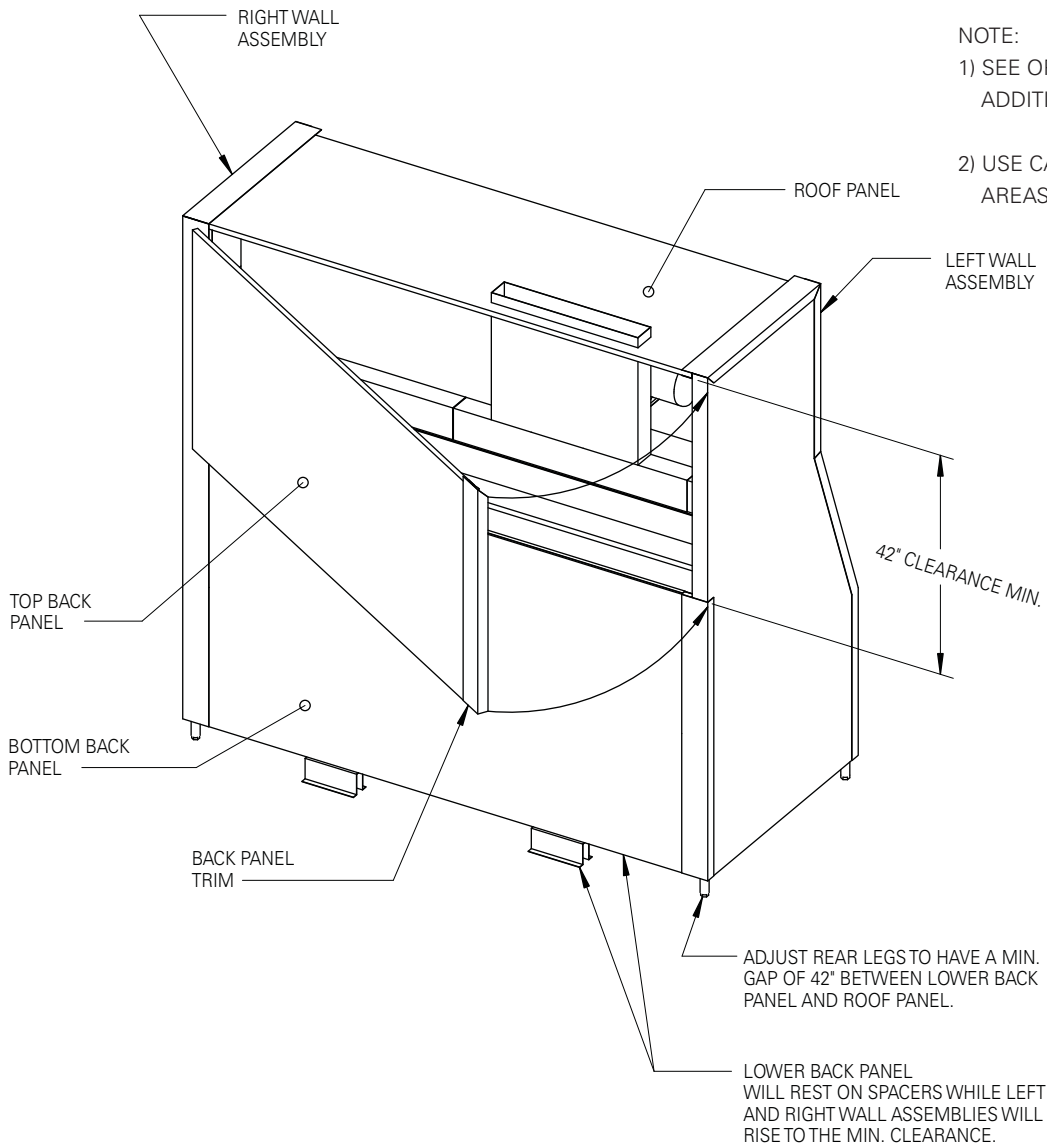
FIRE SUPPRESSION SYSTEM NOT SHOWN FOR CLARITY. SEE SET UP NO.8 FOR INSTALLATION INSTRUCTIONS.

1. Mount motor and fan assembly into place.
Bolt assembly onto channel as shown above.
2. Connect motor junction box to conduit.
3. Connect fan to exhaust vent duct.
4. Connect air switch hose to filter box.
5. Slide sound insulation tray(s) into the area below motor/blower mount.

Parts Required

Description	QTY
Motor and Fan Assembly	1
1/4" x 2" UNC bolt	4
Insulation Tray	1

STEP 10



NOTE:

1) SEE OPERATION MANUAL FOR ADDITIONAL INFORMATION.

2) USE CAULK ON INSIDE OF ALL HOOD AREAS.

Instructions:

1. Adjust rear legs on the left and right wall assembly to have a min. gap of 42" between lower back panel and roof panel. (see above) The lower panel will rest on spacers (not provided) while the wall assemblies are being raised up.
2. Prior to installing the top back panel, insert the back panel trim on the panel and temporarily hold in place.
3. Insert top back panel into groove provided on the right wall assembly, then insert back panel trim into left wall assembly (see drawing above).
4. Lower rear legs to remove all clearances.
5. Screw all (3) back panels in place and remove spacers.

Parts Required

Description	QTY
Top Back Panel	1
#8 x 3/4" Sheet Metal Screws	4

HALTON LIMITED WARRANTY

Halton ("Manufacturer"). Warrants only to its direct purchasers and to no others, that all products manufactured by the Manufacturer shall be free from defect in materials and workmanship for a period of twelve (12) months from the date of the original installation and start-up or eighteen (18) months from date of shipment, whichever occurs first. All products sold but not manufactured by Manufacturer will be warranted for a period of twelve (12) months from date of shipment.

For products manufactured by the Manufacturer we agree to pay any reasonable labor costs necessary to repair or replace, at Manufacturers option, defective parts or materials for a period of twelve (12) months from date of original installation and start-up or eighteen (18) months from date of shipment, whichever occurs first. All labor costs subject hereto shall be performed during standard work hours at straight-time rates.

For products sold but not manufactured by the Manufacturer we agree to pay any reasonable labor costs necessary to repair or replace, at Manufacturers option, defective parts or materials for a period of (90) days from date of original installation and start-up or (12) months from date of shipment, whichever occurs first. All labor costs subject hereto shall be performed during standard work hours at straight-time rates.

Purchaser shall pay incurred premium labor charge, including overtime, weekends and holidays. Travel time, service charges, miscellaneous tools, material charges, and labor charges resulting from inaccessibility of equipment will not be paid by Manufacturer.

This **LIMITED WARRANTY SHALL APPLY ONLY** to products that have been installed and maintained in accordance with the installation and Care Instruction Manuals. Purchaser shall be solely responsible for adhering to the instructions and procedures set forth in the said instruction manuals.

This **LIMITED WARRANTY SHALL NOT BE APPLICABLE** to any damage or defect resulting from fire, flood, freezing or any Act of God, abuse, misuse, accident, neglect or failure to adhere to all instructions set forth in the installation and Care Instruction Manuals. Furthermore, this limited warranty shall not apply to any product that has been altered, unless such alteration has been approved in writing by a duly authorized representative of the manufacturer. In no event shall the manufacturer be liable for any loss, expense, personal injury or consequential damage, of any kind or character, as may result from a defect in material, and/or workmanship, however caused.

EXCEPT AS IS EXPRESSLY SET FORTH IN THIS LIMITED WARRANTY, MANUFACTURER MAKES NO WARRANTY OF MARKETABILITY FOR FITNESS OR ANY PARTICULAR PURPOSE. NEITHER DOES MANUFACTURER MAKE ANY WARRANTY, EXPRESSED OR IMPLIED, WITH RESPECT TO PRODUCTS SOLD BY MANUFACTURER OR AS TO THE USE THEREOF.

Halton Company

101 Industrial Drive, Scottsville, 42164 USA
Tel: 270-237-5600 Fax: 270-237-5700
Website address www.haltoncompany.com

Halton Indoor Climate Systems, Ltd.

1021 Brevik Place • Mississauga, ON L4W 3R7 CANADA
Tel: 905-624-0301 Fax: 905-624-0301
Website address www.haltoncanada.com

Halton
CARE FOR INDOOR AIR